










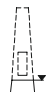
NOKA - dekoračný kužeľový stĺp s jednoramenným výložníkom

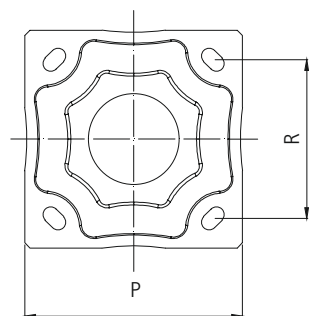
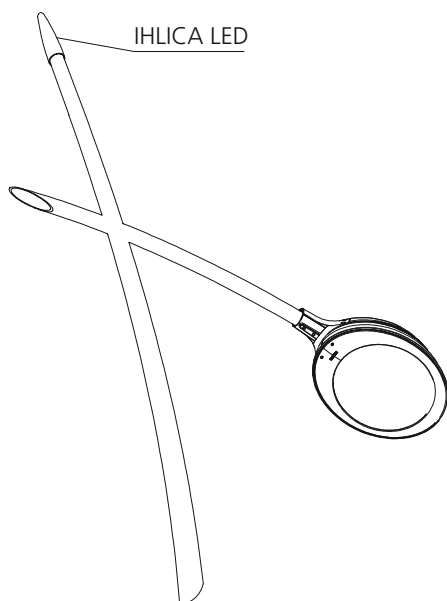
CHARAKTERISTIKA STĽPA

- dekoračné kužeľové stĺpy verejného osvetlenia
- žiarovo zinkovaná oceľ v súlade s normou EN ISO 1461
- možnosť maľovania práškovou metódou podľa palety farieb RAL
- montáž na prefabrikovaný betónový základ

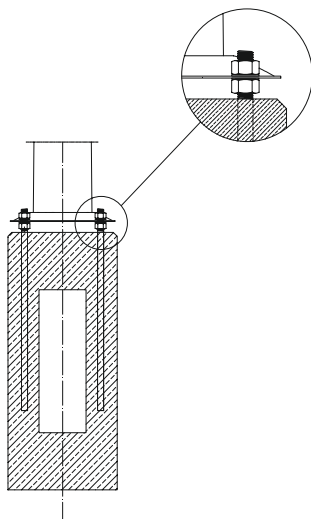
NOKA

Tabuľka s geometriou stĺpa

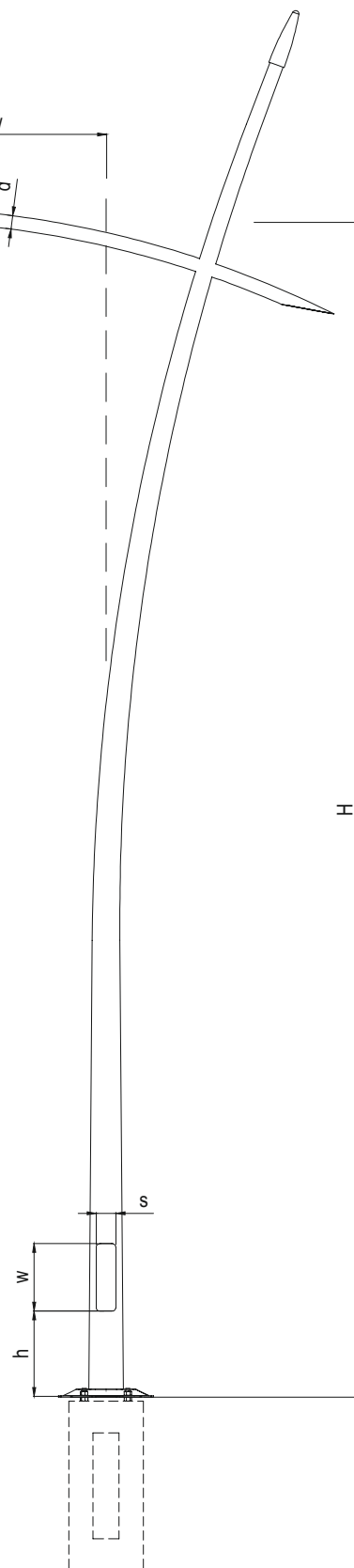
| | | | | | | | | | |
|---|---|---|---|---|---|---|---|---|---|
|  |  |  |  |  |  |  |  |  |  |
| H | w | d | W | s | h | P / R | | | |
| [m] | [m] | [mm] | [mm] | [mm] | [mm] | [mm] | [mm] | [cm] | [mm] |
| 7 | 1 1,5; 2 | 60 | 400 | 100 | 500 | 412 / 300 | M24 | 100 / 43 | 1200 |
| 8 | | | | 120 / 43 | | | | 1500 | |
| 9 | | | | 150 / 43 | | | | | |
| 10 | | | | | | | | | |



Príruba stĺpa



Prefabrikovaný betónový základ



NOKA - jednoramenný výložník

OCEĽ

NOKA - dekoračný kužeľový stĺp s jednoramenným výložníkom



OCEĽ