

KWKSd215H68 Internal Bend 2 Comp.

Overview:

Application

Indoor cable routing for power, voice, and data services

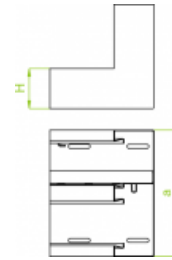
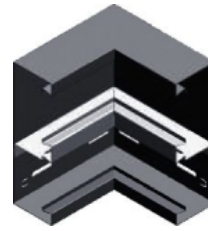
Material

Electro-galvanised steel (EGS) to PN-EN 10152 Paint-finished - white to RAL9010 or grey to RAL 7035

Available to order:

L - powder coating in a full range of colours (PC)

Note: Cover included



Connected products:



KPKS...H68 90° Elbow



KPKSd215H68 90° Elbow 2 Comp.



KS...H68 Wall Trunking



KSd215H68 Wall Trunking 2 Comp.



PKS Cover for Wall Trunking



KWKS...H68 Internal Bend



KZKS...H68 External Bend



KZKSd215H68 External Bend 2 Comp.



TSKS...H68 Tee



TSKSd215H68 Tee 2 Comp.



ZK...H68 Blind End



LKSH68 Notched Connector