

KPKS...H68 90° Elbow

Overview:

Application

Indoor cable routing for power, voice, and data services

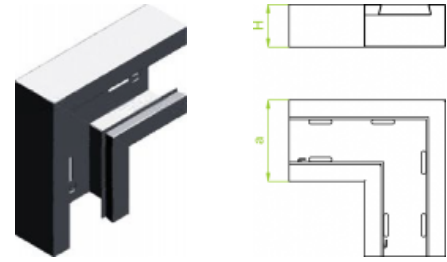
Material

Electro-galvanised steel (EGS) to PN-EN 10152 Paint-finished - white to RAL9010 or grey to RAL 7035

Available to order:

L - powder coating in a full range of colours (PC)

Note: Cover included



Versions:

Sheet thickness: **1,0 mm**

Symbol	Width a [mm]	Catalogue number	Quantity in box	Height H [mm]	Weight 1 pc.
KPKS115H68	115	960411	8	68	0,92
KPKS130H68	130	960413	8	68	0,95
KPKS170H68	170	960417	6	68	1,22

Connected products:



KPKSd215H68
90° Elbow 2
Comp.



KS...H68 Wall
Trunking



KSd215H68 Wall
Trunking 2
Comp.



PKS Cover for
Wall Trunking



KWKS...H68
Internal Bend



KWKSd215H68
Internal Bend 2
Comp.



KZKS...H68
External Bend



KZKSd215H68
External Bend 2
Comp.



TSKS...H68 Tee



TSKSd215H68
Tee 2 Comp.



ZK...H68 Blind
End



LKSH68 Notched
Connector