

## LUJ...H50 90° Vertical Bend

### Overview:

**Application**

Diversions in cable routing.

**Material**

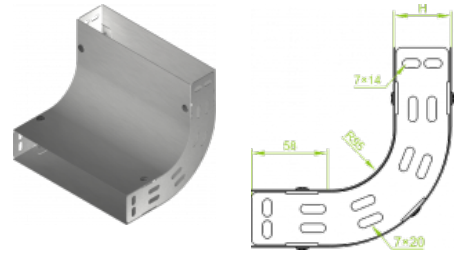
Steel, strip-galv. acc. to the Sendzimir method to PN-EN 10346:2011 (SG)

**Available to order:**

**F-** steel, hot-dip galv. to PN-EN ISO 1461:2011 (HDG)

**E-** stainless steel (SS)

**L-** powder coating in a full range of colours (PC)



**For installation use Screw Sets SGK M6x12 or SG M6x12 and Straight Connectors LPL or LPP. Quick and convenient installation by the use of dismantled parts. This innovative solution allows for fast and safe cable laying without the need of pulling**

### Versions:

Sheet thickness: **1,0 mm**

Symbol	Width a [mm]	Catalogue number	Quantity in box	Weight 1 pc.
LUJ50H50	50	153505	2	0,58
LUJ100H50	100	153510	2	0,84
LUJ150H50	150	153515	2	1,12
LUJ200H50	200	153520	2	1,40
LUJ300H50	300	153530	2	1,96
LUJ400H50	400	153540	2	2,52
LUJ500H50	500	153550	2	3,06
LUJ600H50	600	153560	2	3,62

### Connected products:

