

KRLBP...H50 Vertical Elbow - Left

Overview:

Application

Transition of tray cable run in the horizontal plane to the vertical plane.

Material

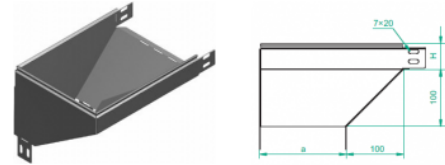
Steel, strip-galv. acc. to the Sendzimir method to PN-EN 10346:2011 (SG)

Available to order:

F- steel, hot-dip galv. to PN-EN ISO 1461:2011 (HDG)

E- stainless steel (SS)

L- powder coating in a full range of colours (PC)



For installation use Screw Sets SGK M6×12 or SG M6×12.

Quick and convenient installation by the use of dismantled parts

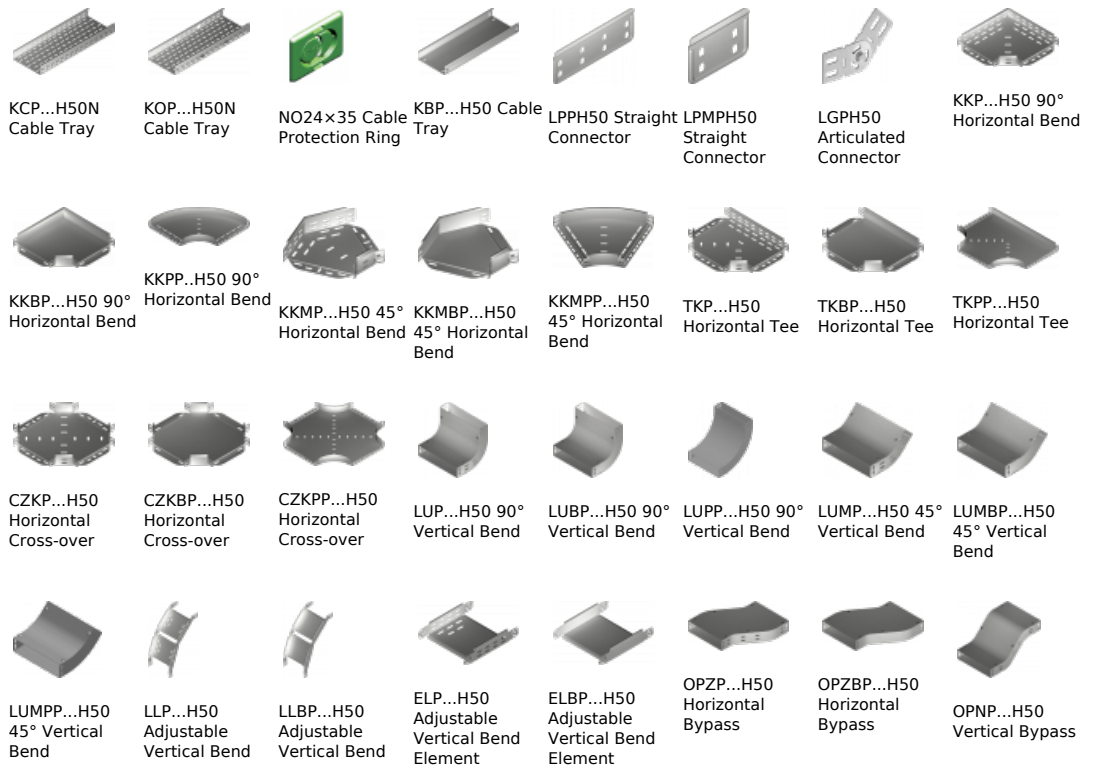
This innovative solution allows for fast and safe cable laying without the need of pulling

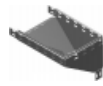
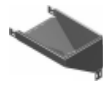
Versions:

Sheet thickness: **1,5 mm**

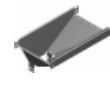
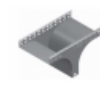
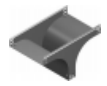
Symbol	Width a [mm]	Catalogue number	Quantity in box	Weight 1 pc.
KRLBP50H50	50	154602	10	0,69
KRLBP100H50	100	154702	10	1,05
KRLBP150H50	150	154802	6	1,59
KRLBP200H50	200	154902	6	2,11
KRLBP300H50	300	155102	4	3,16
KRLBP400H50	400	155202	4	4,22
KRLBP500H50	500	155302	2	5,27
KRLBP600H50	600	155402	2	6,33

Connected products:




 OPNBP...H50
 Vertical Bypass

 KRPP...H50
 Vertical Elbow -
 Right

 KRPBP...H50
 Vertical Elbow -
 Right

 KRLP...H50
 Vertical Elbow -
 Left

 TRP...H50
 Vertical Tee
 -Lengthwise

 TRBP...H50
 Vertical Tee
 -Lengthwise

 TRSP...H50
 Vertical Tee -
 Crosswise

 TRSBP...H50
 Vertical Tee -
 Crosswise

 RKLP...H50 Left
 Reducer

 RKLBP...H50 Left
 Reducer

 RKPP...H50 Right
 Reducer

 RKPBP...H50 Right
 Reducer

 RKSP...H50
 Straight
 Reducer

 RKSBP...H50
 Straight
 Reducer

 TKDP...H50
 Add-on Tee

 LRPPH50 Corner
 Connector