

TRBJ...H50 Vertical Tee -Lengthwise

Overview:

Application

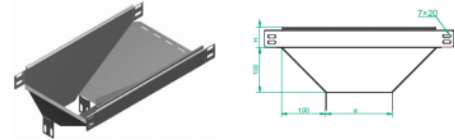
Branching out cable routes. Transition of tray cable run from the horizontal to the vertical plane.

Material

Steel, strip-galv. acc. to the Sendzimir method to PN-EN 10346:2011 (SG)

Available to order:

- F-** steel, hot-dip galv. to PN-EN ISO 1461:2011 (HDG)
- E-** stainless steel (SS)
- L-** powder coating in a full range of colours (PC)



For installation use Screw Sets SGK M6x12 or SG M6x12.
Quick and convenient installation by the use of dismantled parts
This innovative solution allows for fast and safe cable laying without the need of pulling

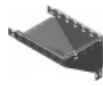
Versions:

Sheet thickness: **1,0 mm**

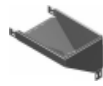
Symbol	Width a [mm]	Catalogue number	Quantity in box	Weight 1 pc.
TRBJ50H50	50	155501	10	0,61
TRBJ100H50	100	155601	10	0,87
TRBJ150H50	150	155701	6	1,26
TRBJ200H50	200	155801	6	1,66
TRBJ300H50	300	156001	4	2,52
TRBJ400H50	400	156101	4	3,36
TRBJ500H50	500	156201	2	4,35
TRBJ600H50	600	156301	2	4,84

Connected products:





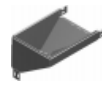
KRPJ...H50
Vertical Elbow -
Right



KRPBJ...H50
Vertical Elbow -
Right



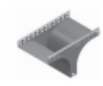
KRLJ...H50
Vertical Elbow -
Left



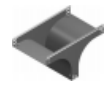
KRLBJ...H50
Vertical Elbow -
Left



TRJ...H50
Vertical Tee
-Lengthwise



TRSJ...H50
Vertical Tee -
Crosswise



TRSBJ...H50
Vertical Tee -
Crosswise



RKLJ...H50 Left
Reducer



RKLBJ...H50 Left
Reducer



RKPJ...H50 Right
Reducer



RKPBJ...H50
Right Reducer



RKSJ...H50
Straight
Reducer



RKSBJ...H50
Straight
Reducer



LRJH50 Corner
Connector



LRBJH50 Corner
Connector



TKDJ...H50
Add-on Tee



LRPJH50 Corner
Connector