

## TRSBJ...H50 Vertical Tee - Crosswise

### Overview:

**Application**

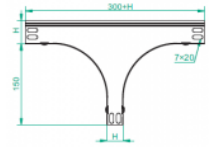
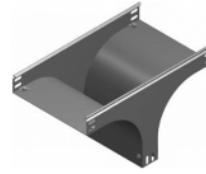
Branching out cable routes. Transition of tray cable run from the horizontal to the vertical plane.

**Material**

Steel, strip-galv. acc. to the Sendzimir method to PN-EN 10346:2011 (SG)

**Available to order:**

- F-** steel, hot-dip galv. to PN-EN ISO 1461:2011 (HDG)
- E-** stainless steel (SS)
- L-** powder coating in a full range of colours (PC)



**For installation use Screw Sets SGK M6x12 or SG M6x12 and Straight Connectors LPL or LPP.**  
**Quick and convenient installation by the use of dismantled parts**  
**This innovative solution allows for fast and safe cable laying without the need of pulling**

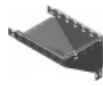
### Versions:

Sheet thickness: **1,0 mm**

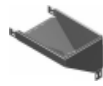
Symbol	Width a [mm]	Catalogue number	Quantity in box	Weight 1 pc.
TRSBJ50H50	50	155503	1	0,68
TRSBJ100H50	100	155603	1	0,87
TRSBJ150H50	150	155703	1	1,06
TRSBJ200H50	200	155803	1	1,24
TRSBJ300H50	300	156003	1	1,61
TRSBJ400H50	400	156103	1	1,98
TRSBJ500H50	500	156203	1	2,35
TRSBJ600H50	600	156303	1	2,71

### Connected products:

KCJ...H50N Cable Tray	KOJ...H50N Cable Tray	NO24x35 Cable Protection Ring	KBJ...H50 Cable Tray	LGJH50 Articulated Connector	LKJH50 Angle Connector	KKJ...H50 90° Horizontal Bend	KKBJ...H50 90° Horizontal Bend
KKPJ...H50 90° Horizontal Bend	KKMJ...H50 45° Horizontal Bend	KKMBJ...H50 45° Horizontal Bend	KKMPJ...H50 45° Horizontal Bend	TKJ...H50 Horizontal Tee	TKBJ...H50 Horizontal Tee	TKPJ...H50 Horizontal Tee	CZKJ...H50 Horizontal Cross-over
CZKBJ...H50 Horizontal Cross-over	CZKPJ...H50 Horizontal Cross-over	LUJ...H50 90° Vertical Bend	LUBJ...H50 90° Vertical Bend	LUPJ...H50 90° Vertical Bend	LUMJ...H50 45° Vertical Bend	LUMBJ...H50 45° Vertical Bend	LUMPJ...H50 45° Vertical Bend
LLJ...H50 Adjustable Vertical Bend	LLBJ...H50 Adjustable Vertical Bend	ELJ...H50 Adjustable Vertical Bend Element	ELBJ...H50 Adjustable Vertical Bend Element	OPZJ...H50 Horizontal Bypass	OPZBJ...H50 Horizontal Bypass	OPNJ...H50 Vertical Bypass	OPNBJ...H50 Vertical Bypass



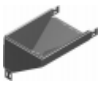
KRPJ...H50  
Vertical Elbow -  
Right



KRPBJ...H50  
Vertical Elbow -  
Right



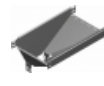
KRLJ...H50  
Vertical Elbow -  
Left



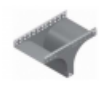
KRLBJ...H50  
Vertical Elbow -  
Left



TRJ...H50  
Vertical Tee  
-Lengthwise



TRBJ...H50  
Vertical Tee  
-Lengthwise



TRSJ...H50  
Vertical Tee -  
Crosswise



RKLJ...H50 Left  
Reducer



RKLBJ...H50 Left  
Reducer



RKPJ...H50 Right  
Reducer



RKPBJ...H50  
Right Reducer



RKSJ...H50  
Straight  
Reducer



RKSBJ...H50  
Straight  
Reducer



LRJH50 Corner  
Connector



LRBJH50 Corner  
Connector



TKDJ...H50  
Add-on Tee



LRPJH50 Corner  
Connector