

## KRLZC...H200 Vertical Elbow - Left

### Overview:

**APPLICATION**

Transition from cable run in the horizontal plane to the vertical plane.

**Material**

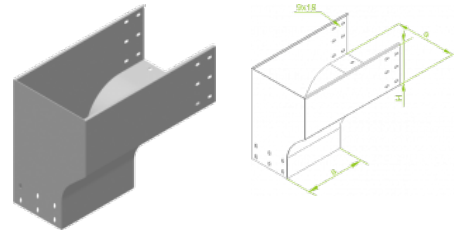
Hot-dip galv. steel to PN-EN ISO 1461:2011 (HDG)

**Available to order:**

E- stainless steel (SS)

L- powder coating in a full range of colours (PC)

**For joining fittings to cable tray lengths use Straight Connectors LZC...**



### Versions:

Sheet thickness: **2,0 mm**

Symbol	Width a [mm]	Catalogue number	Quantity in box	Weight 1 pc.
<b>KRLZC200H200</b>	<b>200</b>	<b>374320</b>	<b>10</b>	<b>8,41</b>
<b>KRLZC300H200</b>	<b>300</b>	<b>374330</b>	<b>4</b>	<b>9,19</b>
<b>KRLZC400H200</b>	<b>400</b>	<b>374340</b>	<b>4</b>	<b>10,36</b>
<b>KRLZC500H200</b>	<b>500</b>	<b>374350</b>	<b>4</b>	<b>11,62</b>
<b>KRLZC600H200</b>	<b>600</b>	<b>374360</b>	<b>4</b>	<b>12,96</b>