

## ZDK... Drop-Out Plate

### Overview:

**Application**

Supporting cable trays and ladders, pipes, and other systems' components

**Material**

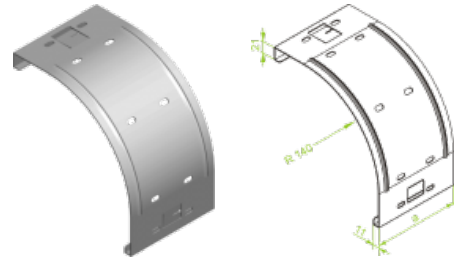
Steel, strip-galv. acc. to the Sendzimir method to PN-EN 10346:2011 (SG)

**Available to order:**

F- steel, hot-dip galv. to PN-EN ISO 1461:2011 (HDG)

E- stainless steel (SS)

L- powder coating in a full range of colours (PC)



**Features & Benefits:**

- quick and versatile to attach to Cable Ladders DK... and DU...

- wide radius of cable drop-out and smooth surface for cables as they exit from the cable ladder

- tool free installation with an option for screwing up with

Screw Set

SR M6x16

### Versions:

Sheet thickness: 1,5 mm

Symbol	Width a [mm]	Catalogue number	Quantity in box	Weight 1 pc.
ZDK200	140	405001	20	0,46
ZDK300	240	405101	20	0,79
ZDK400	340	405201	10	1,12
ZDK500	440	405301	4	1,45
ZDK600	540	405401	4	1,78