

LUP...H50 90° Vertical Bend

Overview:

Application

Diversions in cable routing.

Material

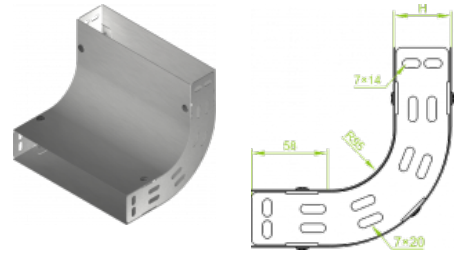
Steel, strip-galv. acc. to the Sendzimir method to PN-EN 10346:2011 (SG)

Available to order:

F- steel, hot-dip galv. to PN-EN ISO 1461:2011 (HDG)

E- stainless steel (SS)

L- powder coating in a full range of colours (PC)



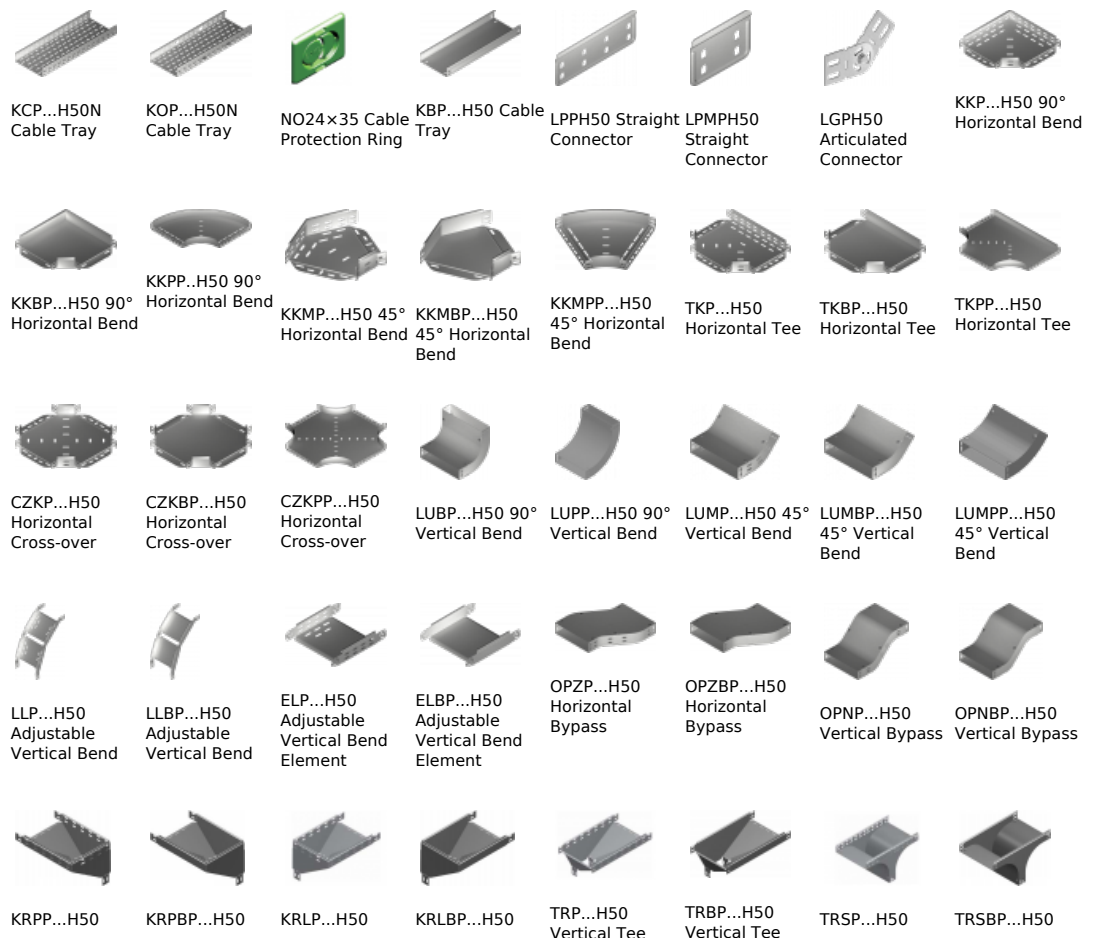
For installation use Screw Sets SGK M6×12 or SG M6×12 and Straight Connectors LPL or LPP. Quick and convenient installation by the use of dismantled parts. This innovative solution allows for fast and safe cable laying without the need of pulling

Versions:

Sheet thickness: 1,5 mm

Symbol	Width a [mm]	Catalogue number	Quantity in box	Weight 1 pc.
LUP50H50	50	153605	10	0,87
LUP100H50	100	153610	10	1,26
LUP150H50	150	153615	10	1,66
LUP200H50	200	153620	10	2,10
LUP300H50	300	153630	4	2,94
LUP400H50	400	153640	4	3,78
LUP500H50	500	153650	4	4,57
LUP600H50	600	153660	4	5,42

Connected products:



Vertical Elbow - Right	Vertical Elbow - Right	Vertical Elbow - Left	Vertical Elbow - Left	-Lengthwise	-Lengthwise	Vertical Tee - Crosswise	Vertical Tee - Crosswise
							
RKLP...H50 Left Reducer	RKLB...H50 Left Reducer	RKPP...H50 Right Reducer	RKPBP...H50 Right Reducer	RKSP...H50 Straight Reducer	RKSBP...H50 Straight Reducer	TKDP...H50 Add-on Tee	LRPPH50 Corner Connector