

## KRLP...H50 Vertical Elbow - Left

### Overview:

**Application**

Transition of tray cable run in the horizontal plane to the vertical plane.

**Material**

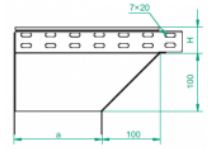
Steel, strip-galv. acc. to the Sendzimir method to PN-EN 10346:2011 (SG)

**Available to order:**

**F-** steel, hot-dip galv. to PN-EN ISO 1461:2011 (HDG)

**E-** stainless steel (SS)

**L-** powder coating in a full range of colours (PC)



**For installation use Screw Sets SGK M6×12 or SG M6×12.**

**Quick and convenient installation by the use of dismantled parts**

**This innovative solution allows for fast and safe cable laying without the need of pulling**

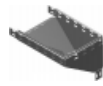
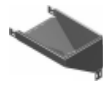
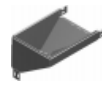
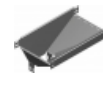
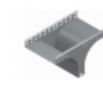
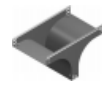
### Versions:

Sheet thickness: **1,5 mm**

Symbol	Width a [mm]	Catalogue number	Quantity in box	Weight 1 pc.
<b>KRLP50H50</b>	<b>50</b>	<b>154805</b>	<b>10</b>	<b>0,69</b>
<b>KRLP100H50</b>	<b>100</b>	<b>154810</b>	<b>10</b>	<b>1,05</b>
<b>KRLP150H50</b>	<b>150</b>	<b>154815</b>	<b>6</b>	<b>1,59</b>
<b>KRLP200H50</b>	<b>200</b>	<b>154820</b>	<b>6</b>	<b>2,11</b>
<b>KRLP300H50</b>	<b>300</b>	<b>154830</b>	<b>4</b>	<b>3,16</b>
<b>KRLP400H50</b>	<b>400</b>	<b>154840</b>	<b>4</b>	<b>4,22</b>
<b>KRLP500H50</b>	<b>500</b>	<b>154850</b>	<b>2</b>	<b>5,27</b>
<b>KRLP600H50</b>	<b>600</b>	<b>154860</b>	<b>2</b>	<b>6,33</b>

### Connected products:

KCP...H50N Cable Tray	KOP...H50N Cable Tray	NO24x35 Cable Protection Ring	KBP...H50 Cable Tray	LPPH50 Straight Connector	LPMPH50 Straight Connector	LGPH50 Articulated Connector	KKP...H50 90° Horizontal Bend
KKBP...H50 90° Horizontal Bend	KKPP...H50 90° Horizontal Bend	KKMP...H50 45° Horizontal Bend	KKMBP...H50 45° Horizontal Bend	KKMPP...H50 45° Horizontal Bend	TKP...H50 Horizontal Tee	TKBP...H50 Horizontal Tee	TKPP...H50 Horizontal Tee
CZKP...H50 Horizontal Cross-over	CZKBP...H50 Horizontal Cross-over	CZKPP...H50 Horizontal Cross-over	LUP...H50 90° Vertical Bend	LUBP...H50 90° Vertical Bend	LUPP...H50 90° Vertical Bend	LUMP...H50 45° Vertical Bend	LUMB...H50 45° Vertical Bend
LUMPP...H50 45° Vertical Bend	LLP...H50 Adjustable Vertical Bend	LLBP...H50 Adjustable Vertical Bend	ELP...H50 Adjustable Vertical Bend Element	ELBP...H50 Adjustable Vertical Bend Element	OPZP...H50 Horizontal Bypass	OPZBP...H50 Horizontal Bypass	OPNP...H50 Vertical Bypass

OPNBP...H50  
Vertical BypassKRPP...H50  
Vertical Elbow -  
RightKRPBP...H50  
Vertical Elbow -  
RightKRLBP...H50  
Vertical Elbow -  
LeftTRP...H50  
Vertical Tee  
-LengthwiseTRBP...H50  
Vertical Tee  
-LengthwiseTRSP...H50  
Vertical Tee -  
CrosswiseTRSBP...H50  
Vertical Tee -  
CrosswiseRKL...H50 Left  
ReducerRKLBP...H50 Left  
ReducerRKPP...H50  
Right ReducerRKPBP...H50  
Right ReducerRKSP...H50  
Straight  
ReducerRKSBP...H50  
Straight  
ReducerTKDP...H50  
Add-on TeeLRPPH50 Corner  
Connector