

KRPP...H50 Vertical Elbow - Right

Overview:

Application

Transition of tray cable run in the horizontal plane to the vertical plane.

Material

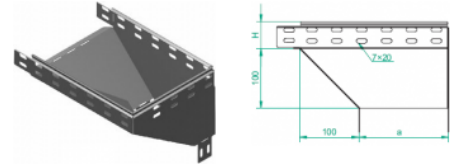
Steel, strip-galv. acc. to the Sendzimir method to PN-EN 10346:2011 (SG)

Available to order:

F- steel, hot-dip galv. to PN-EN ISO 1461:2011 (HDG)

E- stainless steel (SS)

L- powder coating in a full range of colours (PC)



For installation use Screw Sets SGK M6×12 or SG M6×12.

Quick and convenient installation by the use of dismantled parts

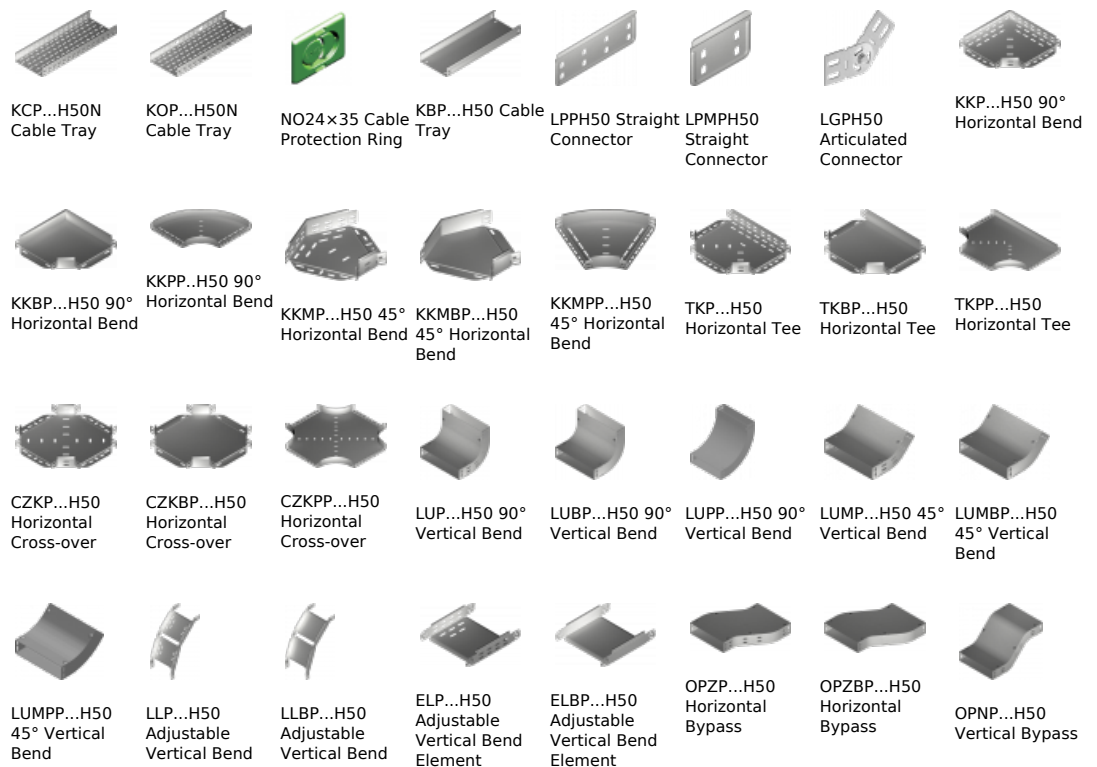
This innovative solution allows for fast and safe cable laying without the need of pulling

Versions:

Sheet thickness: **1,5 mm**

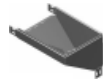
| Symbol | Width a [mm] | Catalogue number | Quantity in box | Weight 1 pc. |
|------------|--------------|------------------|-----------------|--------------|
| KRPP50H50 | 50 | 155005 | 10 | 0,69 |
| KRPP100H50 | 100 | 155010 | 10 | 1,05 |
| KRPP150H50 | 150 | 155015 | 6 | 1,59 |
| KRPP200H50 | 200 | 155020 | 6 | 2,11 |
| KRPP300H50 | 300 | 155030 | 4 | 3,16 |
| KRPP400H50 | 400 | 155040 | 4 | 4,22 |
| KRPP500H50 | 500 | 155050 | 2 | 5,27 |
| KRPP600H50 | 600 | 155060 | 2 | 6,33 |

Connected products:





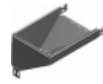
OPNBP...H50
Vertical Bypass



KRPBP...H50
Vertical Elbow -
Right



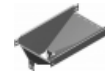
KRLP...H50
Vertical Elbow -
Left



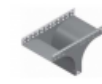
KRLBP...H50
Vertical Elbow -
Left



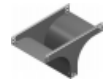
TRP...H50
Vertical Tee
-Lengthwise



TRBP...H50
Vertical Tee
-Lengthwise



TRSP...H50
Vertical Tee -
Crosswise



TRSBP...H50
Vertical Tee -
Crosswise



RKLP...H50 Left
Reducer



RKLBP...H50 Left
Reducer



RKPP...H50 Right
Reducer



RKPBP...H50 Right
Reducer



RKSP...H50 Straight
Reducer



RKSBP...H50 Straight
Reducer



TKDP...H50
Add-on Tee



LRPPH50 Corner
Connector