

RKLP...H50 Left Reducer

Overview:

Application

Reducing/extending widths of cable runs

Material

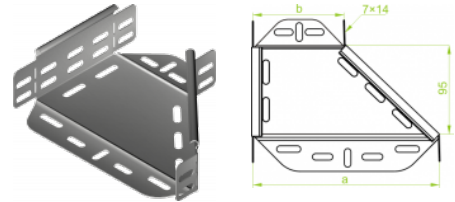
Steel, strip-galv. acc. to the Sendzimir method to PN-EN 10346:2011 (SG)

Available to order:

F- steel, hot-dip galv. to PN-EN ISO 1461:2011 (HDG)

E- stainless steel (SS)

L- powder coating in a full range of colours (PC)



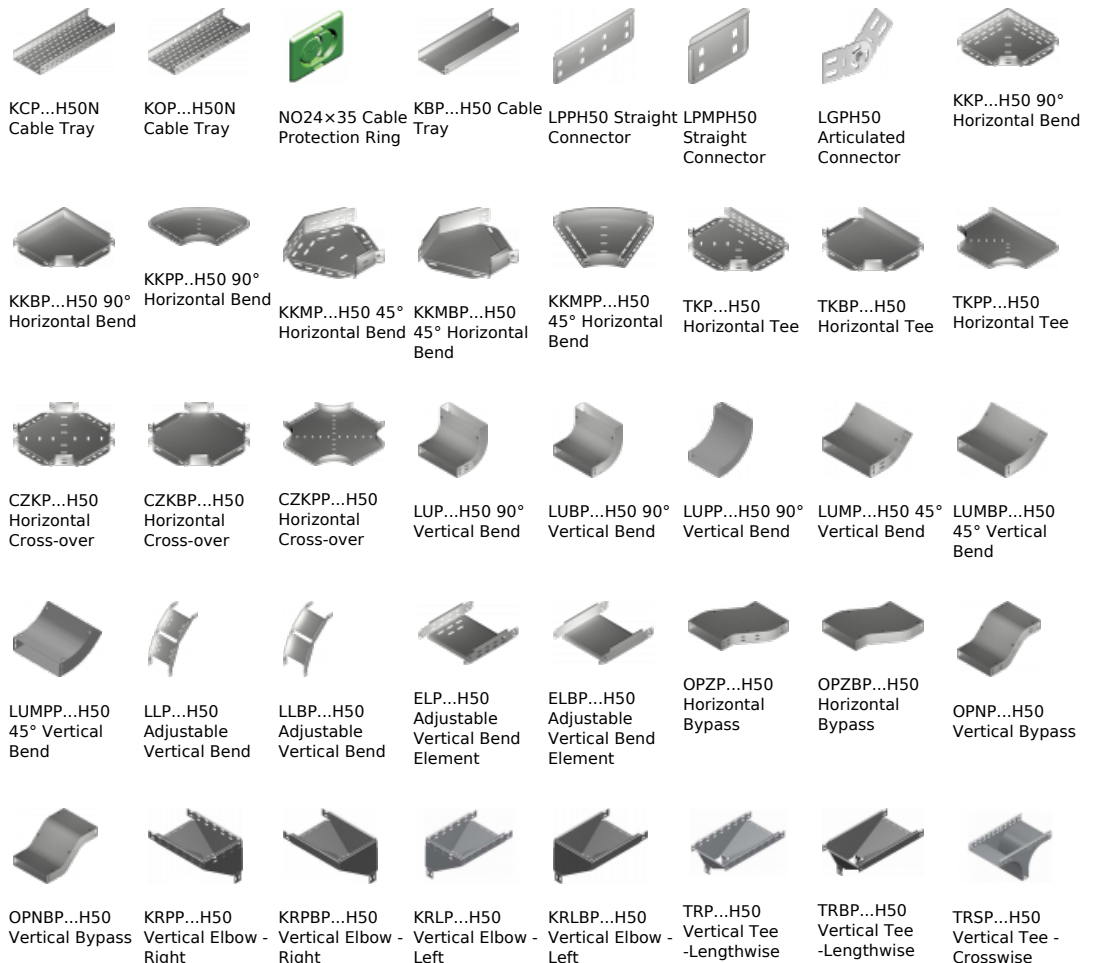
For installation use Screw Sets SGK M6x12 or SG M6x12. In case of special orders please specify dimensions a and b.

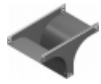
Versions:

Sheet thickness: **1,5 mm**

Symbol	Width a [mm]	Catalogue number	Quantity in box	Weight 1 pc.	Size b [mm]
RKLP100/50H50	100	155610	10	0,26	50
RKLP150/100H50	150	155615	10	0,31	100
RKLP200/100H50	200	155720	10	0,37	100
RKLP200/150H50	200	155820	10	0,40	150
RKLP300/200H50	300	155730	10	0,49	200
RKLP400/300H50	400	155640	10	0,60	300
RKLP500/400H50	500	155650	10	0,71	400
RKLP600/500H50	600	155660	10	0,83	500

Connected products:



TRSBP...H50
Vertical Tee -
CrosswiseRKLBP...H50
ReducerLeftRKPP...H50
Right ReducerRKPBP...H50
Right ReducerRKSP...H50
Straight
ReducerRKSBP...H50
Straight
ReducerTKDP...H50
Add-on TeeLRPPH50 Corner
Connector