

KOJ...H60N Cable Tray

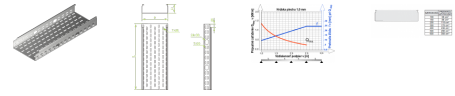
Overview:

Application
Cable routing

Material
Steel, strip-galv. acc. to the Sendzimir method to PN-EN 10346:2011 (SG)

Available to order:
F- steel, hot-dip galv. to PN-EN ISO 1461:2011 (HDG)
E- stainless steel (SS)
L- powder coating in a full range of colours (PC)

Important! Possibility of joining cable tray sections together through sliding one into another and connector-free assembly. Available when ordering in large quantity are 2m long tray sections. To install cable tray use Screw Sets SGK M6x12 or SG M6x12.

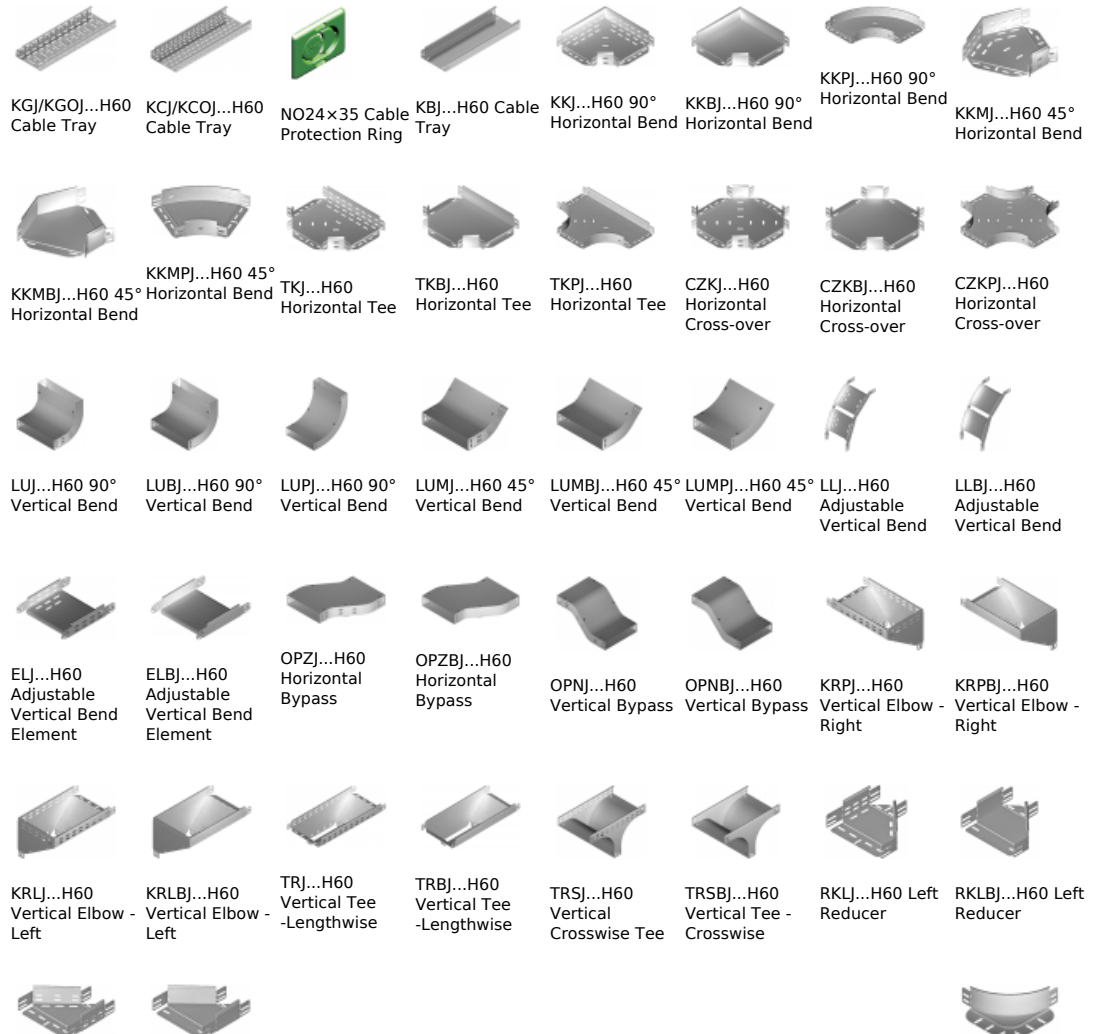


Versions:

Sheet thickness: **1,0 mm**

Symbol	Length L [m]	Width a [mm]	Catalogue number	Quantity in box	Weight [1m]	Effective section
KOJ100H60/3N	3000	100	161610	6	1,63	5800
KOJ150H60/3N	3000	150	161615	6	1,98	8800
KOJ200H60/3N	3000	200	161620	6	2,28	11800
KOJ300H60/3N	3000	300	161630	4	2,96	17800
KOJ400H60/3N	3000	400	161040	4	3,65	23800
KOJ500H60/3N	3000	500	161050	2	4,32	29800
KOJ600H60/3N	3000	600	161060	2	4,99	35800

Connected products:



RKPJ...H60 Right Reducer
RKPBJ...H60 Right Reducer



RKSJ...H60 Straight Reducer

RKSBJ...H60 Straight Reducer



LRJH60 Corner Connector

LRBH60 Corner Connector

TKDJ...H60 Add-on Tee

LRPJH60 Corner Connector