

## TKBJ...H60 Horizontal Tee

### Overview:

**Application**

Branching out cable routes.

**Material**

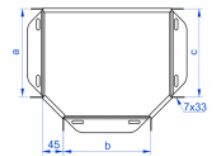
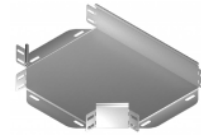
Steel, strip-galv. acc. to the Sendzimir method to PN-EN 10346:2011 (SG)

**Available to order:**

F- steel, hot-dip galv. to PN-EN ISO 1461:2011 (HDG)

E- stainless steel (SS)

L- powder coating in a full range of colours (PC)



**For installation use Screw Sets SGK M6×12 or SG M6×12.  
In case of special orders please specify dimensions: a, b, etc.**

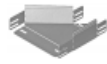
### Versions:

Sheet thickness: **1,0 mm**

| Symbol            | Width a [mm] | Catalogue number | Quantity in box | Weight 1 pc. |
|-------------------|--------------|------------------|-----------------|--------------|
| <b>TKBJ50H60</b>  | <b>50</b>    | <b>164124</b>    | <b>20</b>       | <b>0,28</b>  |
| <b>TKBJ100H60</b> | <b>100</b>   | <b>160901</b>    | <b>20</b>       | <b>0,45</b>  |
| <b>TKBJ150H60</b> | <b>150</b>   | <b>161001</b>    | <b>20</b>       | <b>0,64</b>  |
| <b>TKBJ200H60</b> | <b>200</b>   | <b>161101</b>    | <b>20</b>       | <b>0,90</b>  |
| <b>TKBJ300H60</b> | <b>300</b>   | <b>161301</b>    | <b>20</b>       | <b>1,49</b>  |
| <b>TKBJ400H60</b> | <b>400</b>   | <b>161401</b>    | <b>20</b>       | <b>2,26</b>  |
| <b>TKBJ500H60</b> | <b>500</b>   | <b>161501</b>    | <b>20</b>       | <b>3,04</b>  |
| <b>TKBJ600H60</b> | <b>600</b>   | <b>161601</b>    | <b>20</b>       | <b>3,96</b>  |

### Connected products:

|   |  |  |   |   |  |  |   |
|---|--|--|---|---|--|--|---|
|   |  |  |   |   |  |  |   |
| KGJ/KGOJ...H60<br>Cable Tray                        | KCJ/KCOJ...H60<br>Cable Tray                         | KOJ...H60N<br>Cable Tray                 | NO24x35 Cable<br>Protection Ring          | KBJ...H60 Cable<br>Tray                 | KKJ...H60 90°<br>Horizontal Bend           | KKBJ...H60 90°<br>Horizontal Bend        | KKPJ...H60 90°<br>Horizontal Bend         |
|   |  |  |   |   |  |  |   |
| KKMJ...H60 45°<br>Horizontal Bend                   | KKMBJ...H60 45°<br>Horizontal Bend                   | KKMPJ...H60 45°<br>Horizontal Bend       | TKJ...H60<br>Horizontal Tee               | TKPJ...H60<br>Horizontal Tee            | CZKJ...H60<br>Horizontal<br>Cross-over     | CZKBJ...H60<br>Horizontal<br>Cross-over  | CZKPJ...H60<br>Horizontal<br>Cross-over   |
|   |  |  |   |   |  |  |   |
| LJ...H60 90°<br>Vertical Bend                       | LBJ...H60 90°<br>Vertical Bend                       | LUPJ...H60 90°<br>Vertical Bend          | LUMJ...H60 45°<br>Vertical Bend           | LUMBJ...H60 45°<br>Vertical Bend        | LUMPJ...H60 45°<br>Vertical Bend           | LLJ...H60<br>Adjustable<br>Vertical Bend | LLBJ...H60<br>Adjustable<br>Vertical Bend |
|   |  |  |   |   |  |  |   |
| ELJ...H60<br>Adjustable<br>Vertical Bend<br>Element | ELBJ...H60<br>Adjustable<br>Vertical Bend<br>Element | OPZJ...H60<br>Horizontal<br>Bypass       | OPZBJ...H60<br>Horizontal<br>Bypass       | OPNJ...H60<br>Vertical Bypass           | OPNBJ...H60<br>Vertical Bypass             | KRPJ...H60<br>Vertical Elbow -<br>Right  | KRPBJ...H60<br>Vertical Elbow -<br>Right  |
|   |  |  |   |   |  |  |   |
| KRLJ...H60<br>Vertical Elbow -<br>Left              | KRLBJ...H60<br>Vertical Elbow -<br>Left              | TRJ...H60<br>Vertical Tee<br>-Lengthwise | TRBJ...H60<br>Vertical Tee<br>-Lengthwise | TRSJ...H60<br>Vertical<br>Crosswise Tee | TRSBJ...H60<br>Vertical Tee -<br>Crosswise | RKLJ...H60 Left<br>Reducer               | RKLBJ...H60 Left<br>Reducer               |

RKPJ...H60  
ReducerRight RKPBJ...H60  
Right ReducerRKSJ...H60  
Straight  
ReducerRKSBJ...H60  
Straight  
ReducerLRJH60 Corner  
ConnectorLRBH60 Corner  
ConnectorTKDJ...H60  
Add-on TeeLRPJH60 Corner  
Connector