

KRLBP...H60 Vertical Elbow - Left

Overview:

Application

Transition of tray cable run in the horizontal plane to the vertical plane.

Material

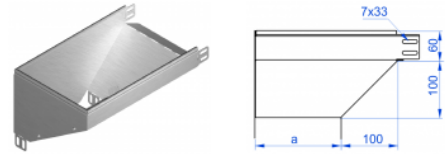
Steel, strip-galv. acc. to the Sendzimir method to PN-EN 10346:2011 (SG)

Available to order:

F- steel, hot-dip galv. to PN-EN ISO 1461:2011 (HDG)

E- stainless steel (SS)

L- powder coating in a full range of colours (PC)



For installation use Screw Sets SGK M6×12 or SG M6×12.

Quick and convenient installation by the use of dismantled parts

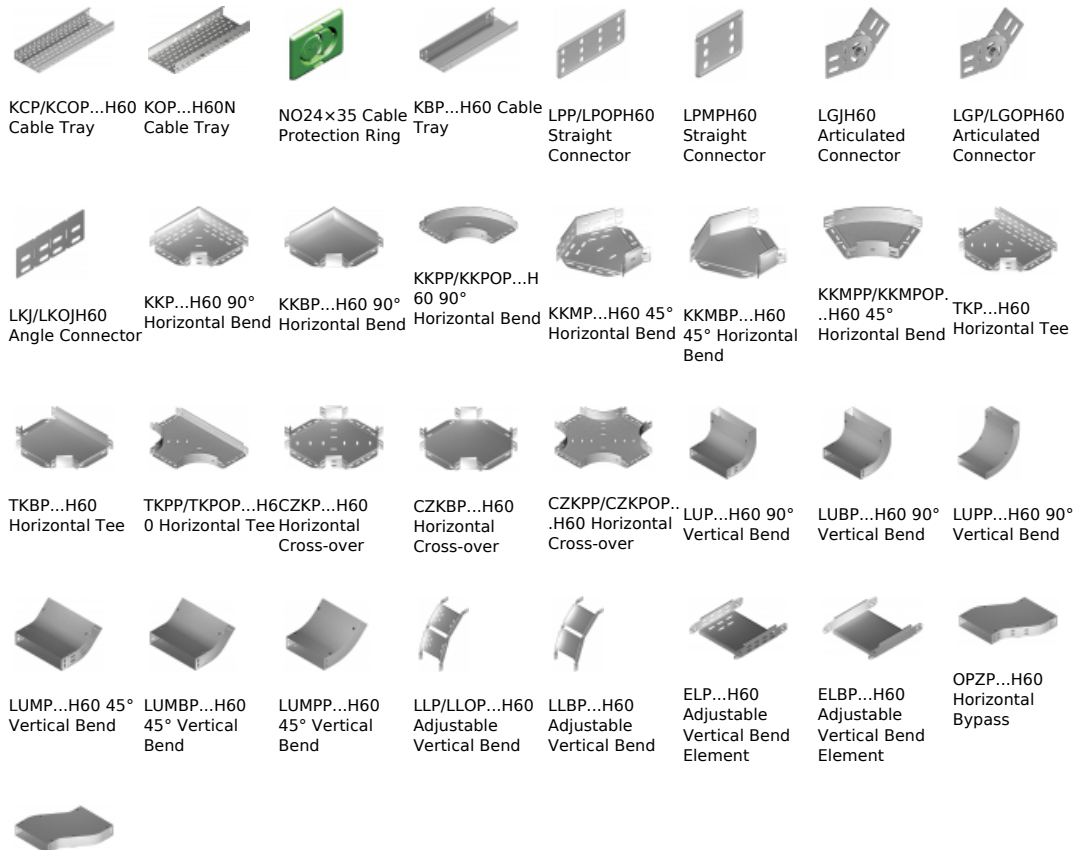
This innovative solution allows for fast and safe cable laying without the need of pulling

Versions:

Sheet thickness: **1,5 mm**

Symbol	Width a [mm]	Catalogue number	Quantity in box	Weight 1 pc.
KRLBP50H60	50	169824	1	0,72
KRLBP100H60	100	164102	1	1,16
KRLBP150H60	150	164202	1	1,74
KRLBP200H60	200	164302	1	2,32
KRLBP300H60	300	164502	1	3,48
KRLBP400H60	400	164602	1	4,64
KRLBP500H60	500	164702	1	5,80
KRLBP600H60	600	164802	1	6,96

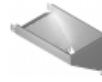
Connected products:



OPZBP...H60
 Horizontal
 Bypass

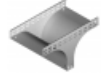
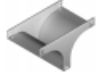
 OPNP...H60
 Vertical Bypass

 OPNBP...H60
 Vertical Bypass

 KRPP...H60
 Vertical Elbow -
 Right

 KRPBP...H60
 Vertical Elbow -
 Right

 KRLP...H60
 Vertical Elbow -
 Left

 TRP...H60
 Vertical Tee
 -Lengthwise

 TRBP...H60
 Vertical Tee
 -Lengthwise

 TRSP...H60
 Vertical Tee -
 Crosswise

 TRSBP...H60
 Vertical Tee -
 Crosswise

 RKL...H60 Left
 Reducer

 RKLBP...H60 Left
 Reducer

 RKPP...H60
 LeftRight Reducer

 RKPBP...H60
 Right Reducer

 RKSP...H60
 Straight
 Reducer

 RKSBP...H60
 Straight
 Reducer

 TKDP...H60
 Add-on Tee

 LRPPH60 Corner
 Connector