

TRBJ...H60 Vertical Tee -Lengthwise

Overview:

Application

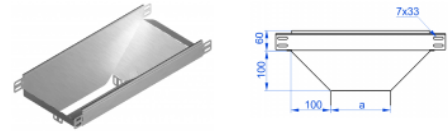
Branching out cable routes. Transition of tray cable run from the horizontal to the vertical plane.

Material

Steel, strip-galv. acc. to the Sendzimir method to PN-EN 10346:2011 (SG)

Available to order:

- F-** steel, hot-dip galv. to PN-EN ISO 1461:2011 (HDG)
- E-** stainless steel (SS)
- L-** powder coating in a full range of colours (PC)



For installation use Screw Sets SGK M6x12 or SG M6x12.
Quick and convenient installation by the use of dismantled parts
This innovative solution allows for fast and safe cable laying without the need of pulling

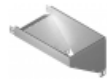
Versions:

Sheet thickness: **1,0 mm**

Symbol	Width a [mm]	Catalogue number	Quantity in box	Weight 1 pc.
TRBJ50H60	50	163523	1	0,62
TRBJ100H60	100	164901	1	0,95
TRBJ150H60	150	165001	1	1,38
TRBJ200H60	200	165101	1	1,83
TRBJ300H60	300	165301	1	2,77
TRBJ400H60	400	165401	1	3,69
TRBJ500H60	500	165501	1	4,79
TRBJ600H60	600	165601	1	5,20

Connected products:

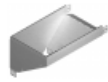
KGJ/KGOJ...H60 Cable Tray	KCJ/KCOJ...H60 Cable Tray	KOJ...H60N Cable Tray	NO24x35 Cable Protection Ring	KBJ...H60 Cable Tray	KKJ...H60 90° Horizontal Bend	KKBJ...H60 90° Horizontal Bend	KKPJ...H60 90° Horizontal Bend
KKMJ...H60 45° Horizontal Bend	KKMBJ...H60 45° Horizontal Bend	KKMPJ...H60 45° Horizontal Bend	TKJ...H60 Horizontal Tee	TKBJ...H60 Horizontal Tee	TKPJ...H60 Horizontal Tee	CZKJ...H60 Horizontal Cross-over	CZKBJ...H60 Horizontal Cross-over
CZKPJ...H60 Horizontal Cross-over	LJ...H60 90° Vertical Bend	LUBJ...H60 90° Vertical Bend	LUPJ...H60 90° Vertical Bend	LUMJ...H60 45° Vertical Bend	LUMBJ...H60 45° Vertical Bend	LUMPJ...H60 45° Vertical Bend	LLJ...H60 Adjustable Vertical Bend
LLBJ...H60 Adjustable Vertical Bend	ELJ...H60 Adjustable Vertical Bend Element	ELBJ...H60 Adjustable Vertical Bend Element	OPZJ...H60 Horizontal Bypass	OPZBJ...H60 Horizontal Bypass	OPNJ...H60 Vertical Bypass	OPNB...H60 Vertical Bypass	KRPJ...H60 Vertical Elbow - Right



KRPBJ...H60
Vertical Elbow -
Right



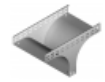
KRLJ...H60
Vertical Elbow -
Left



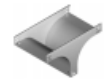
KRLBJ...H60
Vertical Elbow -
Left



TRJ...H60
Vertical Tee
-Lengthwise



TRSJ...H60
Vertical
Crosswise Tee



TRSBJ...H60
Vertical Tee -
Crosswise



RKLJ...H60 Left
Reducer



RKLBJ...H60 Left
Reducer



RKPJ...H60 Right
Reducer



RKPBJ...H60
Right Reducer



RKSJ...H60
Straight
Reducer



RKSBJ...H60
Straight
Reducer



LRJH60 Corner
Connector



LRBH60 Corner
Connector



TKDJ...H60
Add-on Tee



LRPJH60 Corner
Connector