

TRSBJ...H60 Vertical Tee - Crosswise

Overview:

Application

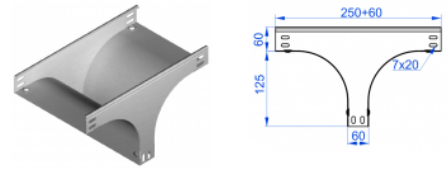
Branching out cable routes. Transition of tray cable run from the horizontal to the vertical plane.

Material

Steel, strip-galv. acc. to the Sendzimir method to PN-EN 10346:2011 (SG)

Available to order:

- F- steel, hot-dip galv. to PN-EN ISO 1461:2011 (HDG)
- E- stainless steel (SS)
- L- powder coating in a full range of colours (PC)



For installation use Screw Sets SGK M6x12 or SG M6x12 and Straight Connectors LPL or LPP.
Quick and convenient installation by the use of dismantled parts
This innovative solution allows for fast and safe cable laying without the need of pulling

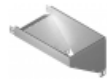
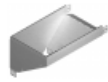
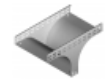
Versions:

Sheet thickness: **1,0 mm**

Symbol	Width a [mm]	Catalogue number	Quantity in box	Weight 1 pc.
TRSBJ50H60	50	163923	1	0,71
TRSBJ100H60	100	164903	1	0,96
TRSBJ150H60	150	165003	1	1,15
TRSBJ200H60	200	165103	1	1,33
TRSBJ300H60	300	165303	1	1,70
TRSBJ400H60	400	165403	1	2,07
TRSBJ500H60	500	165503	1	2,44
TRSBJ600H60	600	165603	1	2,81

Connected products:

KGJ/KGOJ...H60 Cable Tray	KCJ/KCOJ...H60 Cable Tray	KOJ...H60N Cable Tray	NO24x35 Cable Protection Ring	KBJ...H60 Cable Tray	KKJ...H60 90° Horizontal Bend	KKBJ...H60 90° Horizontal Bend	KKPJ...H60 90° Horizontal Bend
KKMJ...H60 45° Horizontal Bend	KKMBJ...H60 45° Horizontal Bend	KKMPJ...H60 45° Horizontal Bend	TKJ...H60 Horizontal Tee	TKBJ...H60 Horizontal Tee	TKPJ...H60 Horizontal Tee	CZKJ...H60 Horizontal Cross-over	CZKBJ...H60 Horizontal Cross-over
CZKPJ...H60 Horizontal Cross-over	LUJ...H60 90° Vertical Bend	LUBJ...H60 90° Vertical Bend	LUPJ...H60 90° Vertical Bend	LUMJ...H60 45° Vertical Bend	LUMBJ...H60 45° Vertical Bend	LUMPJ...H60 45° Vertical Bend	LLJ...H60 Adjustable Vertical Bend
LLBJ...H60 Adjustable Vertical Bend	ELJ...H60 Adjustable Vertical Bend Element	ELBJ...H60 Adjustable Vertical Bend Element	OPZJ...H60 Horizontal Bypass	OPZBJ...H60 Horizontal Bypass	OPNJ...H60 Vertical Bypass	OPNBJ...H60 Vertical Bypass	KRPJ...H60 Vertical Elbow - Right

KRPBJ...H60
Vertical Elbow -
RightKRLJ...H60
Vertical Elbow -
LeftKRLBJ...H60
Vertical Elbow -
LeftTRJ...H60
Vertical Tee
-LengthwiseTRBJ...H60
Vertical Tee
-LengthwiseTRSJ...H60
Vertical
Crosswise TeeRKLJ...H60 Left
ReducerRKLBJ...H60 Left
ReducerRKPJ...H60 Right
ReducerRKPBJ...H60
Right ReducerRKSJ...H60
Straight
ReducerRKSBJ...H60
Straight
ReducerLRJH60 Corner
ConnectorLRBJH60 Corner
ConnectorTKDJ...H60
Add-on TeeLRPJH60 Corner
Connector