

## KRLP...H60 Vertical Elbow - Left

### Overview:

**Application**

Transition of tray cable run in the horizontal plane to the vertical plane.

**Material**

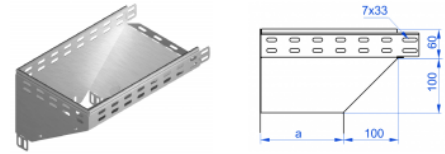
Steel, strip-galv. acc. to the Sendzimir method to PN-EN 10346:2011 (SG)

**Available to order:**

**F-** steel, hot-dip galv. to PN-EN ISO 1461:2011 (HDG)

**E-** stainless steel (SS)

**L-** powder coating in a full range of colours (PC)



**For installation use Screw Sets SGK M6×12 or SG M6×12.**

**Quick and convenient installation by the use of dismantled parts**

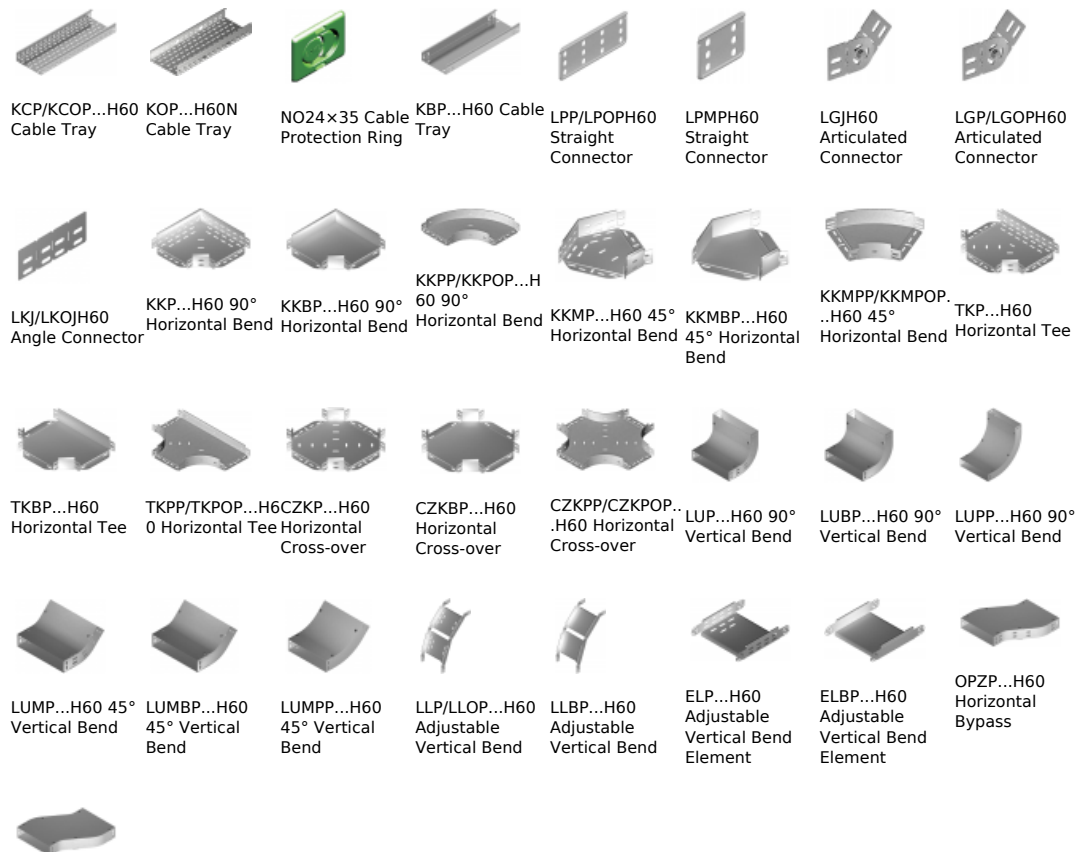
**This innovative solution allows for fast and safe cable laying without the need of pulling**

### Versions:

Sheet thickness: **1,5 mm**

Symbol	Width a [mm]	Catalogue number	Quantity in box	Weight 1 pc.
<b>KRLP50H60</b>	<b>50</b>	<b>169624</b>	<b>1</b>	<b>0,72</b>
<b>KRLP100H60</b>	<b>100</b>	<b>164810</b>	<b>1</b>	<b>1,16</b>
<b>KRLP150H60</b>	<b>150</b>	<b>164815</b>	<b>1</b>	<b>1,74</b>
<b>KRLP200H60</b>	<b>200</b>	<b>164820</b>	<b>1</b>	<b>2,32</b>
<b>KRLP300H60</b>	<b>300</b>	<b>164830</b>	<b>1</b>	<b>3,48</b>
<b>KRLP400H60</b>	<b>400</b>	<b>164840</b>	<b>1</b>	<b>4,64</b>
<b>KRLP500H60</b>	<b>500</b>	<b>164850</b>	<b>1</b>	<b>5,80</b>
<b>KRLP600H60</b>	<b>600</b>	<b>164860</b>	<b>1</b>	<b>6,96</b>

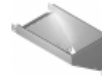
### Connected products:



OPZBP...H60  
 Horizontal  
 Bypass

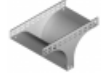
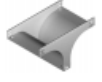
 OPNP...H60  
 Vertical Bypass

 OPNBP...H60  
 Vertical Bypass

 KRPP...H60  
 Vertical Elbow -  
 Right

 KRPBP...H60  
 Vertical Elbow -  
 Right

 KRLBP...H60  
 Vertical Elbow -  
 Left

 TRP...H60  
 Vertical Tee  
 -Lengthwise

 TRBP...H60  
 Vertical Tee  
 -Lengthwise

 TRSP...H60  
 Vertical Tee -  
 Crosswise

 TRSBP...H60  
 Vertical Tee -  
 Crosswise

 RKL...H60 Left  
 Reducer

 RKLBP...H60 Left  
 Reducer

 RKPP...H60  
 LeftRight Reducer

 RKPBP...H60  
 Right Reducer

 RKSP...H60  
 Straight  
 Reducer

 RKSBP...H60  
 Straight  
 Reducer

 TKDP...H60  
 Add-on Tee

 LRPPH60 Corner  
 Connector