

KMP...H50 Cable Tray

Overview:

APPLICATIONS

Connecting cable routes.

MATERIAL

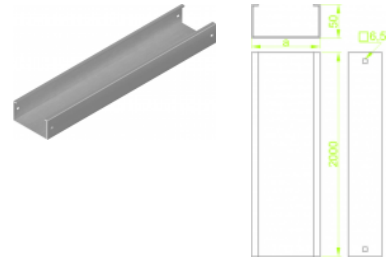
Steel, strip-galv. acc. to the Sendzimir method to PN-EN 10346:2011 (SG).

Available finishes:

F- steel, hot-dip galv. to

PN-EN ISO 1461:2011 (HDG)

E - stainless steel (SS), grade 1.4301 (AISI304)



Cable trays together with covers in a set

Sheet thickness: **1,5 mm**

Versions:

Symbol	Length L [m]	Width a [mm]	Catalogue number	Quantity in box	Weight [1m]
KMP50H50/2	2000	50	810205	2	2,10
KMP100H50/2	2000	100	810210	2	2,71
KMP200H50/2	2000	200	810220	2	3,95
KMP300H50/2	2000	300	810230	2	5,19
KMP400H50/2	2000	400	810240	2	6,42
KMP500H50/2	2000	500	810250	2	7,66
KMP600H50/2	2000	600	810260	2	8,90