

KMP...H100 Cable Tray

Overview:

APPLICATIONS

Connecting cable routes.

MATERIAL

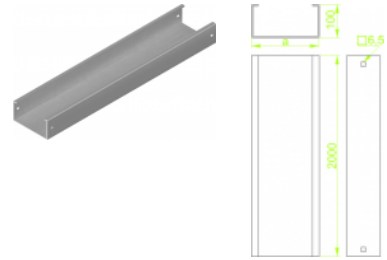
Steel, strip-galv. acc. to the Sendzimir method to PN-EN 10346:2011 (SG).

Available finishes:

F- steel, hot-dip galv. to

PN-EN ISO 1461:2011 (HDG)

E - stainless steel (SS), grade 1.4301 (AISI304)



Cable trays together with covers in a set

Sheet thickness: **1,5 mm**

Versions:

Symbol	Length L [m]	Width a [mm]	Catalogue number	Quantity in box	Weight [1m]
KMP100H100/2	2000	100	813510	2	3,95
KMP200H100/2	2000	200	813520	2	5,19
KMP300H100/2	2000	300	813530	2	6,42
KMP400H100/2	2000	400	813540	2	7,66
KMP500H100/2	2000	500	813550	2	8,89
KMP600H100/2	2000	600	813560	2	10,13