

## KMC..H100 Cable Tray

### Overview:

#### APPLICATIONS

Connecting cable routes.

#### MATERIAL

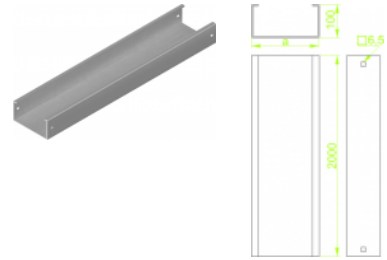
Steel, strip-galv. acc. to the Sendzimir method to PN-EN 10346:2011 (SG).

Available finishes:

F- steel, hot-dip galv. to

PN-EN ISO 1461:2011 (HDG)

E - stainless steel (SS), grade 1.4301 (AISI304)



#### Cable trays together with covers in a set

Sheet thickness: **2,0 mm**

### Versions:

Symbol	Length L [m]	Width a [mm]	Catalogue number	Quantity in box	Weight [1m]
<b>KMC100H100/2</b>	<b>2000</b>	<b>100</b>	<b>813610</b>	<b>2</b>	<b>5,27</b>
<b>KMC200H100/2</b>	<b>2000</b>	<b>200</b>	<b>813620</b>	<b>2</b>	<b>6,92</b>
<b>KMC300H100/2</b>	<b>2000</b>	<b>300</b>	<b>813630</b>	<b>2</b>	<b>8,56</b>
<b>KMC400H100/2</b>	<b>2000</b>	<b>400</b>	<b>813640</b>	<b>2</b>	<b>10,24</b>
<b>KMC500H100/2</b>	<b>2000</b>	<b>500</b>	<b>813650</b>	<b>2</b>	<b>11,86</b>
<b>KMC600H100/2</b>	<b>2000</b>	<b>600</b>	<b>813660</b>	<b>2</b>	<b>13,51</b>