

KMC...H200 Cable Tray

Overview:

APPLICATIONS

Connecting cable routes.

MATERIAL

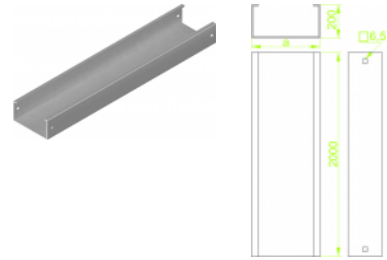
Steel, strip-galv. acc. to the Sendzimir method to PN-EN 10346:2011 (SG).

Available finishes:

F- steel, hot-dip galv. to

PN-EN ISO 1461:2011 (HDG)

E - stainless steel (SS), grade 1.4301 (AISI304)



Cable trays together with covers in a set

Sheet thickness: **2,0 mm**

Versions:

Symbol	Length L [m]	Width a [mm]	Catalogue number	Quantity in box	Weight [1m]
KMC200H200/2	2000	200	816820	2	10,21
KMC300H200/2	2000	300	816830	2	11,04
KMC400H200/2	2000	400	816840	2	13,51
KMC500H200/2	2000	500	816850	2	15,16
KMC600H200/2	2000	600	816860	2	16,80