

KRLBJ...H80 Vertical Elbow - Left

Overview:

Application

Transition of tray cable run in the horizontal plane to the vertical plane.

Material

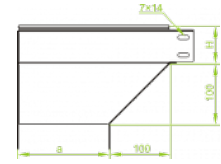
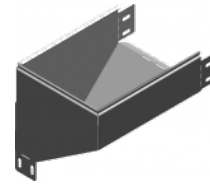
Steel, strip-galv. acc. to the Sendzimir method to PN-EN 10346:2011 (SG)

Available to order:

F- steel, hot-dip galv. to PN-EN ISO 1461:2011 (HDG)

E- stainless steel (SS)

L- powder coating in a full range of colours (PC)



For installation use Screw Sets SGK M6×12 or SG M6×12.

Quick and convenient installation by the use of dismantled parts

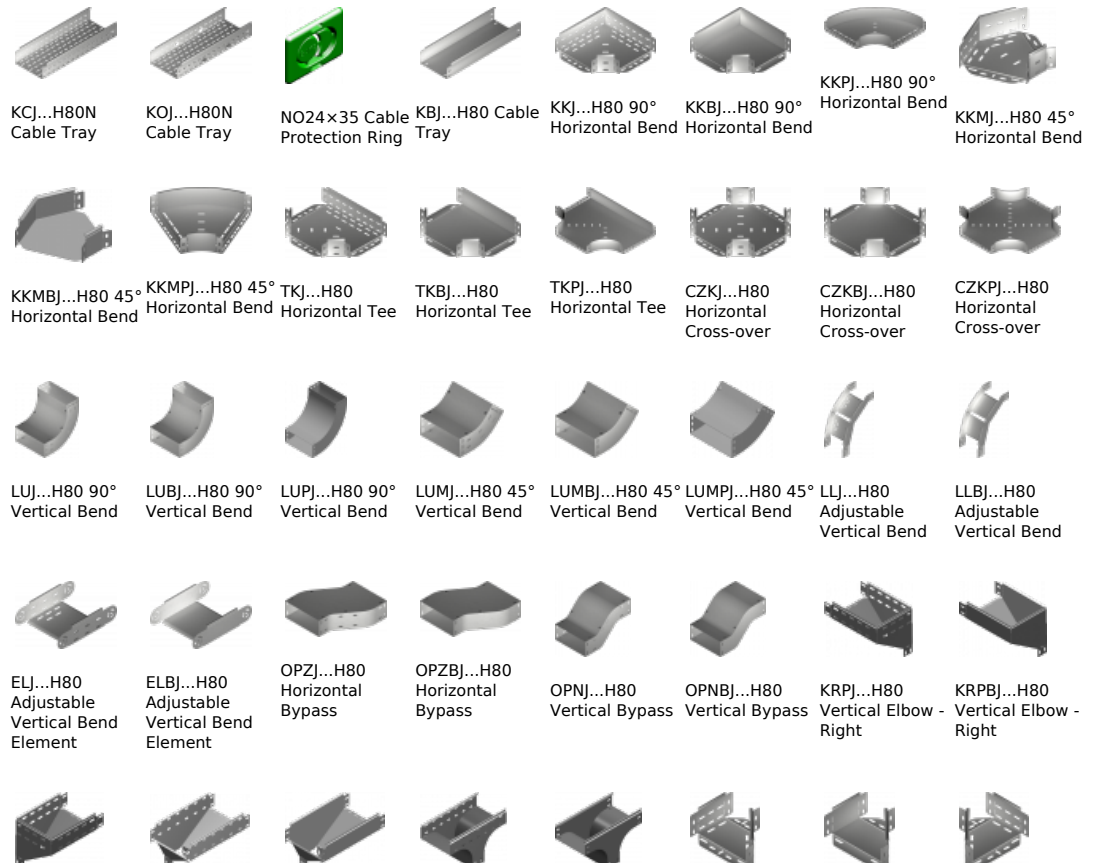
This innovative solution allows for fast and safe cable laying without the need of pulling









Versions:

Sheet thickness: **1,0 mm**

Symbol	Width a [mm]	Catalogue number	Quantity in box	Weight 1 pc.
KRLBJ100H80	100	188110	4	0,88
KRLBJ150H80	150	188115	4	1,34
KRLBJ200H80	200	188120	4	1,78
KRLBJ300H80	300	188130	2	2,78
KRLBJ400H80	400	188140	2	3,60
KRLBJ500H80	500	188150	2	4,60
KRLBJ600H80	600	188160	2	5,50

Connected products:



KRLJ...H80 Vertical Elbow - Left	TRJ...H80 Vertical Tee -Lengthwise	TRBJ...H80 Vertical Tee -Lengthwise	TRSJ...H80 Vertical Tee - Crosswise	TRSBJ...H80 Vertical Tee - Crosswise	RKLJ...H80 Left Reducer	RKLBJ...H80 Left Reducer	RKPJ...H80 Right Reducer
							
RKPBJ...H80 Right Reducer	RKSJ...H80 Straight Reducer	RKSBJ...H80 Straight Reducer	LRJH80 Corner Connector	LRBJH80 Corner Connector	TKDJ...H80 Add-on Tee	LRPJH80 Corner Connector	