

## KRPBJ...H80 Vertical Elbow - Right

### Overview:

**Application**

Transition of tray cable run in the horizontal plane to the vertical plane.

**Material**

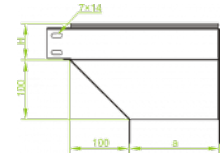
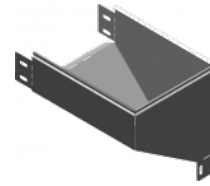
Steel, strip-galv. acc. to the Sendzimir method to PN-EN 10346:2011 (SG)

**Available to order:**

F- steel, hot-dip galv. to PN-EN ISO 1461:2011 (HDG)

E- stainless steel (SS)

L- powder coating in a full range of colours (PC)



**For installation use Screw Sets SGK M6x12 or SG M6x12.**

**Quick and convenient installation by the use of dismantled parts**

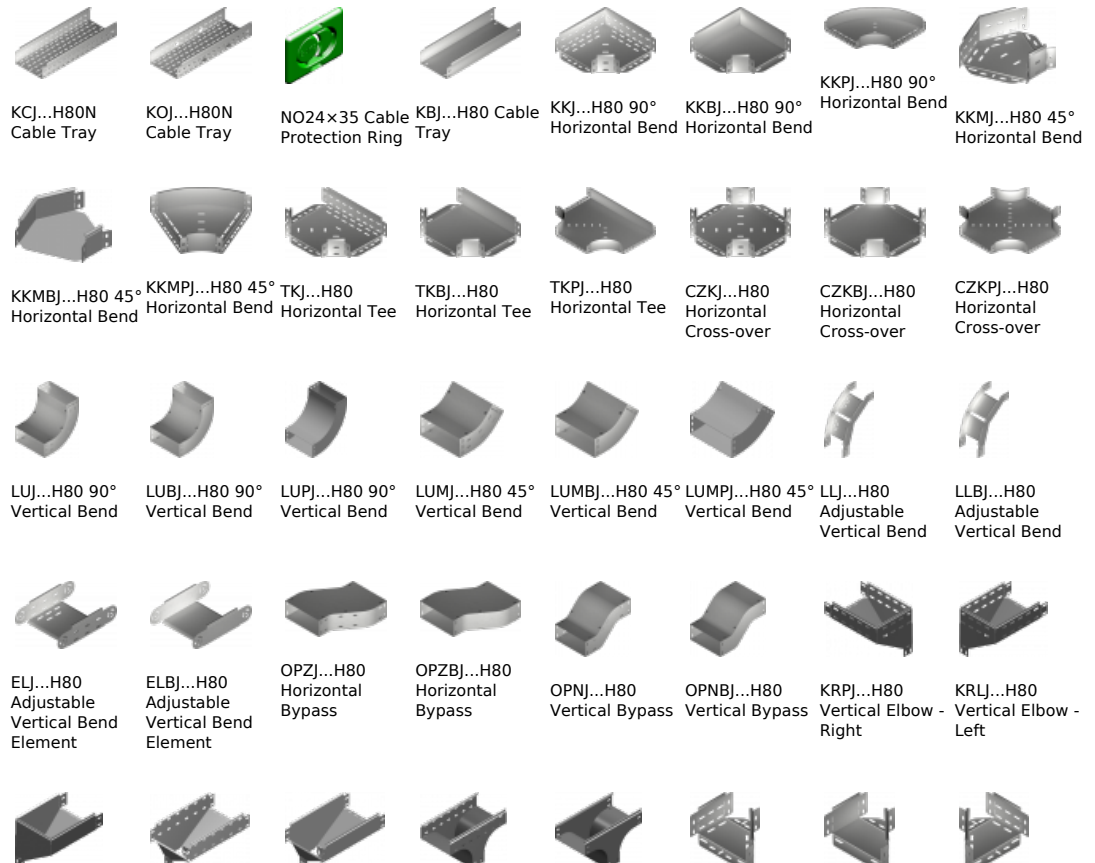
**This innovative solution allows for fast and safe cable laying without the need of pulling**









### Versions:

Sheet thickness: **1,0 mm**

Symbol	Width a [mm]	Catalogue number	Quantity in box	Weight 1 pc.
KRPBJ100H80	100	188310	4	0,88
KRPBJ150H80	150	188315	4	1,34
KRPBJ200H80	200	188320	4	1,78
KRPBJ300H80	300	188330	2	2,78
KRPBJ400H80	400	188340	2	3,60
KRPBJ500H80	500	188350	2	4,60
KRPBJ600H80	600	188360	2	5,50

### Connected products:



KRLBJ...H80 Vertical Elbow - Left	TRJ...H80 Vertical Tee -Lengthwise	TRBJ...H80 Vertical Tee -Lengthwise	TRSJ...H80 Vertical Tee - Crosswise	TRSBJ...H80 Vertical Tee - Crosswise	RKLJ...H80 Left Reducer	RKLBJ...H80 Left Reducer	RKPJ...H80 Right Reducer
							
RKPBJ...H80 Right Reducer	RKSJ...H80 Straight Reducer	RKSBJ...H80 Straight Reducer	LRJH80 Corner Connector	LRBJH80 Corner Connector	TKDJ...H80 Add-on Tee	LRPJH80 Corner Connector	