

TRBJ...H80 Vertical Tee -Lengthwise

Overview:

Application

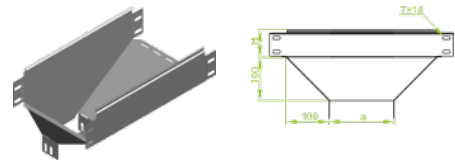
Branching out cable routes. Transition of tray cable run from the horizontal to the vertical plane.

Material

Steel, strip-galv. acc. to the Sendzimir method to PN-EN 10346:2011 (SG)

Available to order:

- F-** steel, hot-dip galv. to PN-EN ISO 1461:2011 (HDG)
- E-** stainless steel (SS)
- L-** powder coating in a full range of colours (PC)



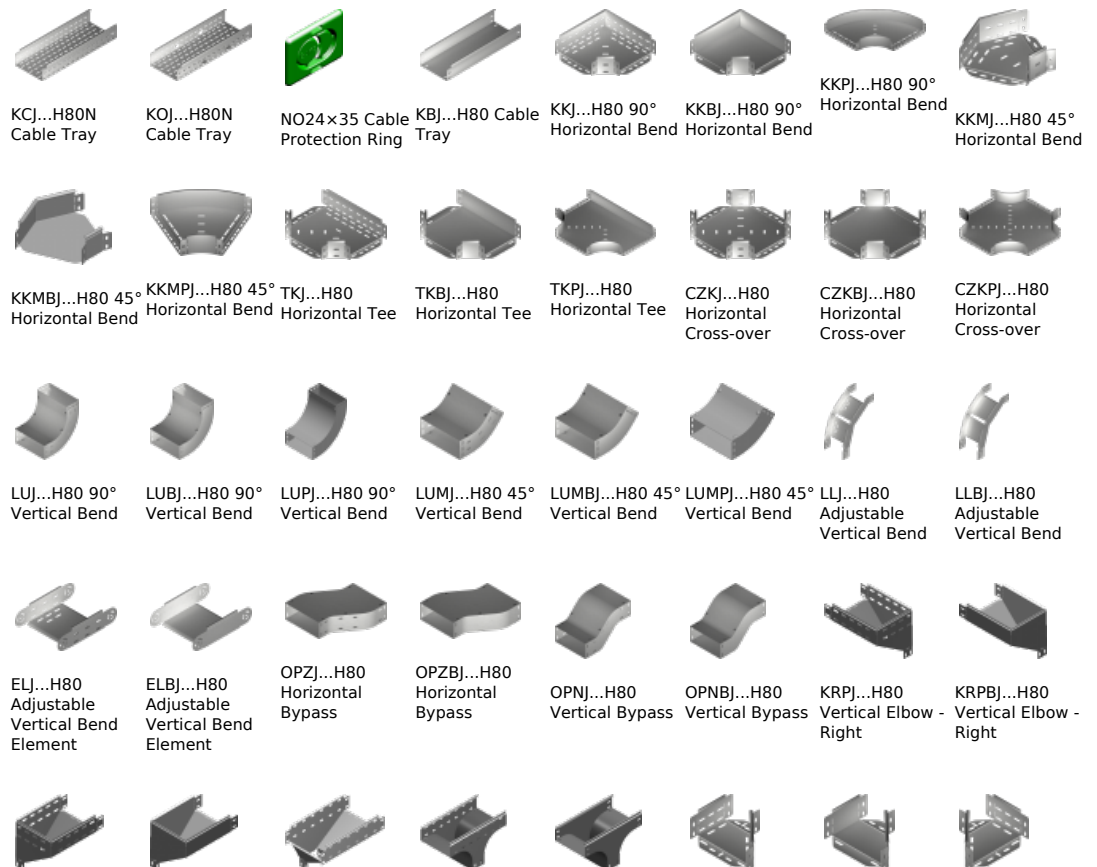
For installation use Screw Sets SGK M6x12 or SG M6x12.
Quick and convenient installation by the use of dismantled parts
This innovative solution allows for fast and safe cable laying without the need of pulling









Versions:

Sheet thickness: **1,0 mm**

Symbol	Width a [mm]	Catalogue number	Quantity in box	Weight 1 pc.
TRBJ100H80	100	188510	4	1,09
TRBJ150H80	150	188515	4	1,59
TRBJ200H80	200	188520	4	2,01
TRBJ300H80	300	188530	2	3,15
TRBJ400H80	400	188540	2	4,25
TRBJ500H80	500	188550	1	5,40
TRBJ600H80	600	188560	1	5,80

Connected products:



KRLJ...H80 Vertical Elbow - Left	KRLBJ...H80 Vertical Elbow - Left	TRJ...H80 Vertical Tee -Lengthwise	TRSJ...H80 Vertical Tee - Crosswise	TRSBJ...H80 Vertical Tee - Crosswise	RKLJ...H80 Left Reducer	RKLBJ...H80 Left Reducer	RKPJ...H80 Right Reducer
							
RKPBJ...H80 Right Reducer	RKSJ...H80 Straight Reducer	RKSBJ...H80 Straight Reducer	LRJH80 Corner Connector	LRBJH80 Corner Connector	TKDJ...H80 Add-on Tee	LRPJH80 Corner Connector	