

## TRSBP...H80 Vertical Tee - Crosswise

### Overview:

**Application**

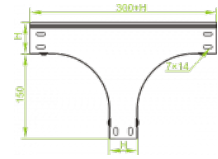
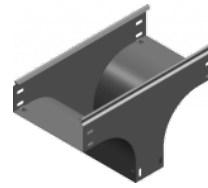
Branching out cable routes. Transition of tray cable run from the horizontal to the vertical plane.

**Material**

Steel, strip-galv. acc. to the Sendzimir method to PN-EN 10346:2011 (SG)

**Available to order:**

- F-** steel, hot-dip galv. to PN-EN ISO 1461:2011 (HDG)
- E-** stainless steel (SS)
- L-** powder coating in a full range of colours (PC)



**For installation use Screw Sets SGK M6×12 or SG M6×12 and Straight Connectors LPL or LPP.**  
**Quick and convenient installation by the use of dismantled parts**  
**This innovative solution allows for fast and safe cable laying without the need of pulling**

### Versions:

Sheet thickness: **1,5 mm**

Symbol	Width a [mm]	Catalogue number	Quantity in box	Weight 1 pc.
TRSBP100H80	100	188810	4	1,75
TRSBP150H80	150	188815	4	2,02
TRSBP200H80	200	188820	4	2,30
TRSBP300H80	300	188830	1	2,85
TRSBP400H80	400	188840	1	3,40
TRSBP500H80	500	188850	1	3,96
TRSBP600H80	600	188860	1	4,50

### Connected products:

KCP...H80N Cable Tray	KOP...H80N Cable Tray	NO24×35 Cable Protection Ring	KBP...H80 Cable Tray	LPPH80 Straight Connector	LGP80 Articulated Connector	LKD80 Angle Connector	KKP...H80 90° Horizontal Bend
KKBP...H80 90° Horizontal Bend	KKPP...H80 90° Horizontal Bend	KKMP...H80 45° Horizontal Bend	KKMBP...H80 45° Horizontal Bend	KKMPP...H80 45° Horizontal Bend	TKP...H80 Horizontal Tee	TKBP...H80 Horizontal Tee	TKPP...H80 Horizontal Tee
CZKP...H80 Horizontal Cross-over	CZKBP...H80 Horizontal Cross-over	CZKPP...H80 Horizontal Cross-over	LUP...H80 90° Vertical Bend	LUBP...H80 90° Vertical Bend	LUPP...H80 90° Vertical Bend	LUMP...H80 45° Vertical Bend	LUMB...H80 45° Vertical Bend
LUMPP...H80 45° Vertical Bend	LLP...H80 Adjustable Vertical Bend	LLBP...H80 Adjustable Vertical Bend	ELP...H80 Adjustable Vertical Bend Element	ELBP...H80 Adjustable Vertical Bend Element	OPZP...H80 Horizontal Bypass	OPZBP...H80 Horizontal Bypass	OPNP...H80 Vertical Bypass


 OPNBP...H80  
 Vertical Bypass

 KRPP...H80  
 Vertical Elbow -  
 Right

 KRPBP...H80  
 Vertical Elbow -  
 Right

 KRLP...H80  
 Vertical Elbow -  
 Left

 KRLBP...H80  
 Vertical Elbow -  
 Left

 TRP...H80  
 Vertical Tee  
 -Lengthwise

 TRBP...H80  
 Vertical Tee  
 -Lengthwise

 TRSP...H80  
 Vertical Tee -  
 Crosswise

 RKLP...H80 Left  
 Reducer

 RKLBP...H80 Left  
 Reducer

 RKPP...H80  
 Right Reducer

 RKPBP...H80  
 Right Reducer

 RKSP...H80  
 Straight  
 Reducer

 RKSBP...H80  
 Straight  
 Reducer

 TKDP...H80  
 Add-on Tee

 LRPPH80 Corner  
 Connector