

WSL75 Hanger

Overview:

APPLICATIONS

Suspending luminaire cable trays
Assembly of cable tray 75 and 120mm wide

MATERIAL

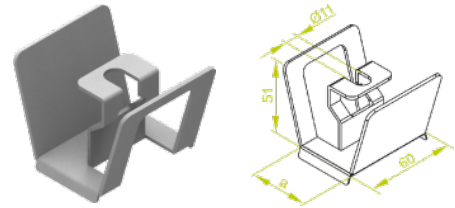
Steel, strip-galv. acc. to the Sendzimir method to PN-EN 10346:2011 (SG).

Available finishes:

F - steel, hot-dip galv. to

PN-EN ISO 1461:2011 (HDG)

E - stainless steel (SS), grade 1.4301 (AISI304),



Features & Benefits:

Fast installation both directly to the ceiling, and with the use of a threaded rod.