

CMM41H21...F Support Channel

Overview:

Application

Used for suspending lighting, as part of the assembly, and as construction element for installing cable trays, ladders, and Brackets **WW**, **WWS/WWSO**, **WWC**, **WWCN**, **WMC/WMCO**, **WMCN**, **WPL**, **WWD**, **WPT**, **WTL**, **WWT**.

Material

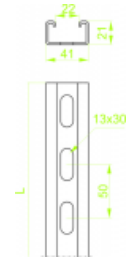
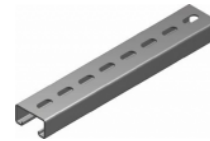
Steel, hot-dip galv. to PN-EN ISO 1461:2011 (HDG)

Available to order:

Steel, strip-galv. acc. to the Sendzimir method to PN-EN 10346:2011 (SG)

E- stainless steel, lengths up to 3 m, addition CMC41H21, CMM41H21 and CMT41H21 (SS)

L- powder coating in a full range of colours (PC)



Versions:

Sheet thickness: **2,5 mm**

Symbol	Length L [m]	Width a [mm]	Catalogue number	Quantity in box	Height H [mm]	Weight 1 pc.
CMM41H21/2F	2000	41	620322	8	21	4,20
CMM41H21/3F	3000	41	620332	8	21	6,30