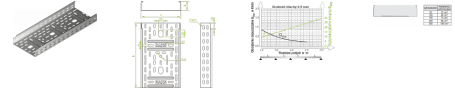


KPR Cable Tray

Overview:

End of production in the fourth quarter of 2014



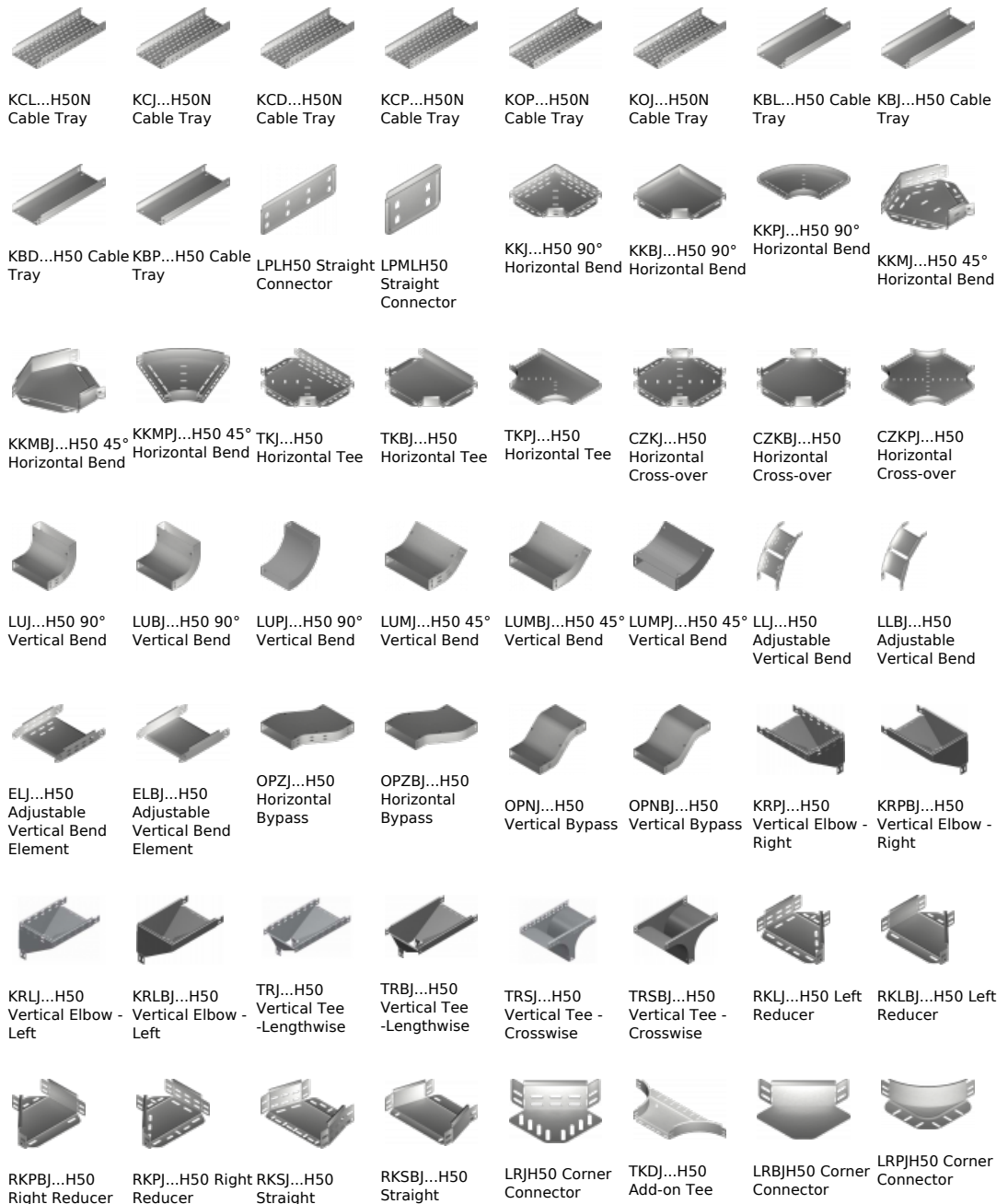
Application
Cable routing

Material
Steel, strip-galv. acc. to the Sendzimir method to PN-EN 10346:2011 (SG)

Available to order:
L- powder coating in a full range of colours (PC)

Important! Possibility of joining cable tray sections together through sliding one into another and connector-free assembly. To install cable tray use Screw Sets SGK M6x12 or SG M6x12.

Connected products:





SG... Screw Set SM... Screw Set

Reducer

Reducer