

LUMBJ...H30 45° Vertical Bend

Overview:

Application

Diversions in cable routing.

Material

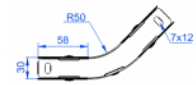
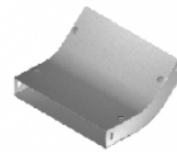
Steel, strip-galv. acc. to the Sendzimir method to PN-EN 10346:2011 (SG)

Available to order:

F- steel, hot-dip galv. to PN-EN ISO 1461:2011 (HDG)

E- stainless steel (SS)

L- powder coating in a full range of colours (PC)



For installation use Screw Sets SGK M6×10 or SG M6×10 and Straight Connectors LPL or LPP. Quick and convenient installation by the use of dismantled parts. This innovative solution allows for fast and safe cable laying without the need of pulling

Versions:

Sheet thickness: **1,0 mm**

Symbol	Width a [mm]	Catalogue number	Quantity in box	Weight 1 pc.
LUMBJ50H30	50	135905	2	0,34
LUMBJ100H30	100	135910	2	0,52
LUMBJ150H30	150	135915	2	0,72
LUMBJ200H30	200	135920	2	0,92
LUMBJ300H30	300	135930	2	1,30

Connected products:

