

OPZP...H80 Horizontal Bypass

Overview:

Application

Bypassing mechanical obstacles in cable routing

Material

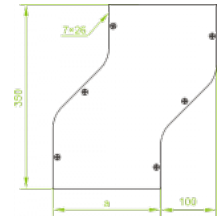
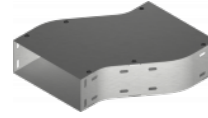
Steel, strip-galv. acc. to the Sendzimir method to PN-EN 10346:2011 (SG)

Available to order:

F- steel, hot-dip galv. to PN-EN ISO 1461:2011 (HDG)

E- stainless steel (SS)

L- powder coating in a full range of colours (PC)



For installation use Screw Sets SGK M6x12 or SG M6x12 and Straight Connectors LPL or LPP. Quick and convenient installation by the use of dismantled parts. This innovative solution allows for fast and safe cable laying without the need of pulling





Versions:

Sheet thickness: 1,5 mm

Symbol	Width a [mm]	Catalogue number	Quantity in box	Weight 1 pc.
OPZP100H80	100	183810	10	1,46
OPZP150H80	150	183815	10	1,84
OPZP200H80	200	183820	4	2,22
OPZP300H80	300	183830	4	3,16
OPZP400H80	400	183840	2	3,80
OPZP500H80	500	183850	2	4,94
OPZP600H80	600	183860	2	5,44

Connected products:

KCP...H80N Cable Tray	KOP...H80N Cable Tray	NO24x35 Cable Protection Ring	KBP...H80 Cable Tray	LPPH80 Straight Connector	LGP80 Articulated Connector	LKD80 Angle Connector	KKP...H80 90° Horizontal Bend
KKBP...H80 90° Horizontal Bend	KKPP...H80 90° Horizontal Bend	KKMP...H80 45° Horizontal Bend	KKMBP...H80 45° Horizontal Bend	KKMPP...H80 45° Horizontal Bend	TKP...H80 Horizontal Tee	TKBP...H80 Horizontal Tee	TKPP...H80 Horizontal Tee
CZKP...H80 Horizontal Cross-over	CZKBP...H80 Horizontal Cross-over	CZKPP...H80 Horizontal Cross-over	LUP...H80 90° Vertical Bend	LUBP...H80 90° Vertical Bend	LUPP...H80 90° Vertical Bend	LUMP...H80 45° Vertical Bend	LUMB...H80 45° Vertical Bend
LUMPP...H80 45° Vertical Bend	LLP...H80 Adjustable Vertical Bend	LLBP...H80 Adjustable Vertical Bend	ELP...H80 Adjustable Vertical Bend Element	ELBP...H80 Adjustable Vertical Bend Element	OPZBP...H80 Horizontal Bypass	OPNP...H80 Vertical Bypass	OPNBP...H80 Vertical Bypass
KRPP...H80 Vertical Elbow	KRPBP...H80 Vertical Elbow	KRLP...H80 Vertical Elbow	KRLBP...H80 Vertical Elbow	TRP...H80 Vertical Tee	TRBP...H80 Vertical Tee	TRSP...H80 Vertical Tee	TRSBP...H80 Vertical Tee

Right	Right	Left	Left	-Lengthwise	-Lengthwise	Crosswise	Crosswise
							
RKLP...H80 Left Reducer	RKLBP...H80 Left Reducer	RKPP...H80 Right Reducer	RKPBP...H80 Right Reducer	RKSP...H80 Straight Reducer	RKSBP...H80 Straight Reducer	TKDP...H80 Add-on Tee	LRPPH80 Corner Connector