

## TRSP...H80 Vertical Tee - Crosswise

### Overview:

**Application**

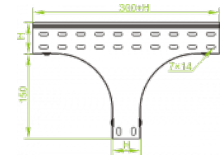
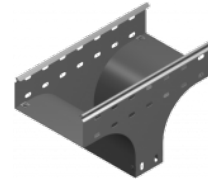
Branching out cable routes. Transition of tray cable run from the horizontal to the vertical plane.

**Material**

Steel, strip-galv. acc. to the Sendzimir method to PN-EN 10346:2011 (SG)

**Available to order:**

- F-** steel, hot-dip galv. to PN-EN ISO 1461:2011 (HDG)
- E-** stainless steel (SS)
- L-** powder coating in a full range of colours (PC)



**For installation use Screw Sets SGK M6×12 or SG M6×12 and Straight Connectors LPL or LPP.**  
**Quick and convenient installation by the use of dismantled parts**  
**This innovative solution allows for fast and safe cable laying without the need of pulling**

### Versions:

Sheet thickness: **1,5 mm**

Symbol	Width a [mm]	Catalogue number	Quantity in box	Weight 1 pc.
TRSP100H80	100	184810	4	1,75
TRSP150H80	150	184815	4	2,02
TRSP200H80	200	184820	4	2,30
TRSP300H80	300	184830	1	2,85
TRSP400H80	400	184840	1	3,40
TRSP500H80	500	184850	1	3,96
TRSP600H80	600	184860	1	4,50

### Connected products:

KCP...H80N Cable Tray	KOP...H80N Cable Tray	NO24×35 Cable Protection Ring	KBP...H80 Cable Tray	LPPH80 Straight Connector	LGP80 Articulated Connector	LKD80 Angle Connector	KKP...H80 90° Horizontal Bend
KKBP...H80 90° Horizontal Bend	KKPP...H80 90° Horizontal Bend	KKMP...H80 45° Horizontal Bend	KKMBP...H80 45° Horizontal Bend	KKMPP...H80 45° Horizontal Bend	TKP...H80 Horizontal Tee	TKBP...H80 Horizontal Tee	TKPP...H80 Horizontal Tee
CZKP...H80 Horizontal Cross-over	CZKBP...H80 Horizontal Cross-over	CZKPP...H80 Horizontal Cross-over	LUP...H80 90° Vertical Bend	LUBP...H80 90° Vertical Bend	LUPP...H80 90° Vertical Bend	LUMP...H80 45° Vertical Bend	LUMB...H80 45° Vertical Bend
LUMPP...H80 45° Vertical Bend	LLP...H80 Adjustable Vertical Bend	LLBP...H80 Adjustable Vertical Bend	ELP...H80 Adjustable Vertical Bend Element	ELBP...H80 Adjustable Vertical Bend Element	OPZP...H80 Horizontal Bypass	OPZBP...H80 Horizontal Bypass	OPNP...H80 Vertical Bypass



OPNBP...H80  
Vertical Bypass



KRPP...H80  
Vertical Elbow -  
Right



KRPBP...H80  
Vertical Elbow -  
Right



KRLP...H80  
Vertical Elbow -  
Left



KRLBP...H80  
Vertical Elbow -  
Left



TRP...H80  
Vertical Tee  
-Lengthwise



TRBP...H80  
Vertical Tee  
-Lengthwise



TRSBP...H80  
Vertical Tee -  
Crosswise



RKLP...H80 Left  
Reducer



RKLBP...H80 Left  
Reducer



RKPP...H80  
Right Reducer



RKPBP...H80  
Right Reducer



RKSP...H80  
Straight  
Reducer



RKSBP...H80  
Straight  
Reducer



TKDP...H80  
Add-on Tee



LRPPH80 Corner  
Connector