

## LUPP...H80 90° Vertical Bend

### Overview:

**Application**

Diversions in cable routing.

**Material**

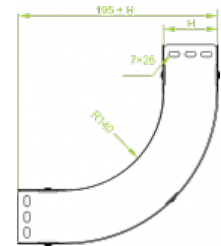
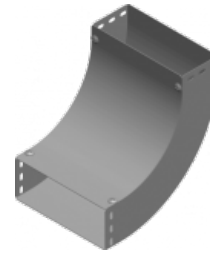
Steel, strip-galv. acc. to the Sendzimir method to PN-EN 10346:2011 (SG)

**Available to order:**

F- steel, hot-dip galv. to PN-EN ISO 1461:2011 (HDG)

E- stainless steel (SS)

L- powder coating in a full range of colours (PC)



**For installation use Screw Sets SGK M6x12 or SG M6x12 and Straight Connectors LPL or LPP. Quick and convenient installation by the use of dismantled parts. This innovative solution allows for fast and safe cable laying without the need of pulling**





### Versions:

Sheet thickness: 1,5 mm

| Symbol     | Width a [mm] | Catalogue number | Quantity in box | Weight 1 pc. |
|------------|--------------|------------------|-----------------|--------------|
| LUPP100H80 | 100          | 186414           | 10              | 2,28         |
| LUPP150H80 | 150          | 186514           | 10              | 2,86         |
| LUPP200H80 | 200          | 186614           | 4               | 3,43         |
| LUPP300H80 | 300          | 186714           | 4               | 4,57         |
| LUPP400H80 | 400          | 186814           | 2               | 5,73         |
| LUPP500H80 | 500          | 186914           | 2               | 6,85         |
| LUPP600H80 | 600          | 187014           | 2               | 8,01         |

### Connected products:

|  |   |   |  |                                       |                                     |                                    |                                     |
|--|---|---|--|---------------------------------------|-------------------------------------|------------------------------------|-------------------------------------|
|  |   |   |  |                                       |                                     |                                    |                                     |
| KCP...H80N<br>Cable Tray                 | KOP...H80N<br>Cable Tray                  | NO24x35 Cable<br>Protection Ring                    | KBP...H80 Cable<br>Tray                              | LPPH80 Straight<br>Connector          | LGP80 Articulated<br>Connector      | LKD80 Angle<br>Connector           | KKP...H80 90°<br>Horizontal Bend    |
|  |   |   |  |                                       |                                     |                                    |                                     |
| KKBP...H80 90°<br>Horizontal Bend        | KKPP...H80 90°<br>Horizontal Bend         | KKMP...H80 45°<br>Horizontal Bend                   | KKMBP...H80<br>45° Horizontal<br>Bend                | KKMPP...H80<br>45° Horizontal<br>Bend | TKP...H80<br>Horizontal Tee         | TKBP...H80<br>Horizontal Tee       | TKPP...H80<br>Horizontal Tee        |
|  |   |   |  |                                       |                                     |                                    |                                     |
| CZKP...H80<br>Horizontal<br>Cross-over   | CZKBP...H80<br>Horizontal<br>Cross-over   | CZKPP...H80<br>Horizontal<br>Cross-over             | LUP...H80 90°<br>Vertical Bend                       | LUBP...H80 90°<br>Vertical Bend       | LUMP...H80 45°<br>Vertical Bend     | LUMB...H80<br>45° Vertical<br>Bend | LUMPP...H80<br>45° Vertical<br>Bend |
|  |   |   |  |                                       |                                     |                                    |                                     |
| LLP...H80<br>Adjustable<br>Vertical Bend | LLBP...H80<br>Adjustable<br>Vertical Bend | ELP...H80<br>Adjustable<br>Vertical Bend<br>Element | ELBP...H80<br>Adjustable<br>Vertical Bend<br>Element | OPZP...H80<br>Horizontal<br>Bypass    | OPZBP...H80<br>Horizontal<br>Bypass | OPNP...H80<br>Vertical Bypass      | OPNBP...H80<br>Vertical Bypass      |
|  |   |   |  |                                       |                                     |                                    |                                     |
| KRPP...H80<br>Vertical Elbow             | KRPBP...H80<br>Vertical Elbow             | KRLP...H80<br>Vertical Elbow                        | KRLBP...H80<br>Vertical Elbow                        | TRP...H80<br>Vertical Tee             | TRBP...H80<br>Vertical Tee          | TRSP...H80<br>Vertical Tee         | TRSBP...H80<br>Vertical Tee         |

| Right   | Right   | Left  | Left  | -Lengthwise  | -Lengthwise   | Crosswise   | Crosswise   |
|---|---|---|---|--|---|---|---|
|  |  |  |  |  |  |  |  |
| RKLP...H80 Left Reducer   | RKLBP...H80 Left Reducer  | RKPP...H80 Right Reducer  | RKPBP...H80 Right Reducer   | RKSP...H80 Straight Reducer  | RKSBP...H80 Straight Reducer  | TKDP...H80 Add-on Tee   | LRPPH80 Corner Connector  |