

## LUMPP...H80 45° Vertical Bend

### Overview:

**Application**

Diversions in cable routing.

**Material**

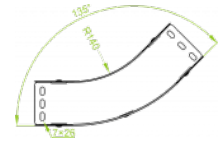
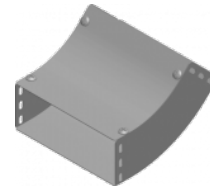
Steel, strip-galv. acc. to the Sendzimir method to PN-EN 10346:2011 (SG)

**Available to order:**

F- steel, hot-dip galv. to PN-EN ISO 1461:2011 (HDG)

E- stainless steel (SS)

L- powder coating in a full range of colours (PC)



**For installation use Screw Sets SGK M6×12 or SG M6×12 and Straight Connectors LPL or LPP. Quick and convenient installation by the use of dismantled parts. This innovative solution allows for fast and safe cable laying without the need of pulling**





### Versions:

Sheet thickness: 1,5 mm

Symbol	Width a [mm]	Catalogue number	Quantity in box	Weight 1 pc.
LUMPP100H80	100	187814	10	1,59
LUMPP150H80	150	187914	10	1,98
LUMPP200H80	200	188014	4	2,40
LUMPP300H80	300	188114	4	3,19
LUMPP400H80	400	188214	2	4,01
LUMPP500H80	500	188314	2	4,78
LUMPP600H80	600	188414	2	5,58

### Connected products:

KCP...H80N Cable Tray	KOP...H80N Cable Tray	NO24x35 Cable Protection Ring	KBP...H80 Cable Tray	LPPH80 Straight Connector	LGP80 Articulated Connector	LKD80 Angle Connector	KKP...H80 90° Horizontal Bend
KKBP...H80 90° Horizontal Bend	KKPP...H80 90° Horizontal Bend	KKMP...H80 45° Horizontal Bend	KKMBP...H80 45° Horizontal Bend	KKMPP...H80 45° Horizontal Bend	TKP...H80 Horizontal Tee	TKBP...H80 Horizontal Tee	TKPP...H80 Horizontal Tee
CZKP...H80 Horizontal Cross-over	CZKBP...H80 Horizontal Cross-over	CZKPP...H80 Horizontal Cross-over	LUP...H80 90° Vertical Bend	LUBP...H80 90° Vertical Bend	LUPP...H80 90° Vertical Bend	LUMP...H80 45° Vertical Bend	LUMB...H80 45° Vertical Bend
LLP...H80 Adjustable Vertical Bend	LLBP...H80 Adjustable Vertical Bend	ELP...H80 Adjustable Vertical Bend Element	ELBP...H80 Adjustable Vertical Bend Element	OPZP...H80 Horizontal Bypass	OPZBP...H80 Horizontal Bypass	OPNP...H80 Vertical Bypass	OPNBP...H80 Vertical Bypass
KRPP...H80 Vertical Elbow -	KRPBP...H80 Vertical Elbow -	KRLP...H80 Vertical Elbow -	KRLBP...H80 Vertical Elbow -	TRP...H80 Vertical Tee	TRBP...H80 Vertical Tee	TRSP...H80 Vertical Tee -	TRSBP...H80 Vertical Tee -

Right	Right	Left	Left	-Lengthwise	-Lengthwise	Crosswise	Crosswise
							
RKLP...H80 Left Reducer	RKLBP...H80 Left Reducer	RKPP...H80 Right Reducer	RKPBP...H80 Right Reducer	RKSP...H80 Straight Reducer	RKSBP...H80 Straight Reducer	TKDP...H80 Add-on Tee	LRPPH80 Corner Connector