

## KRPBP..H100 Vertical Elbow - Right

### Overview:

**Application**

Transition of tray cable run in the horizontal plane to the vertical plane.

**Material**

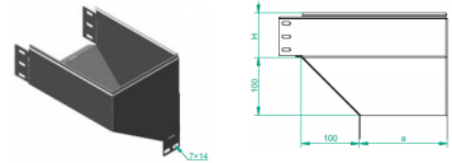
Steel, strip-galv. acc. to the Sendzimir method to PN-EN 10346:2011 (SG)

**Available to order:**

F- steel, hot-dip galv. to PN-EN ISO 1461:2011 (HDG)

E- stainless steel (SS)

L- powder coating in a full range of colours (PC)



**For installation use Screw Sets SGK M6×12 or SG M6×12.**

**Quick and convenient installation by the use of dismantled parts**

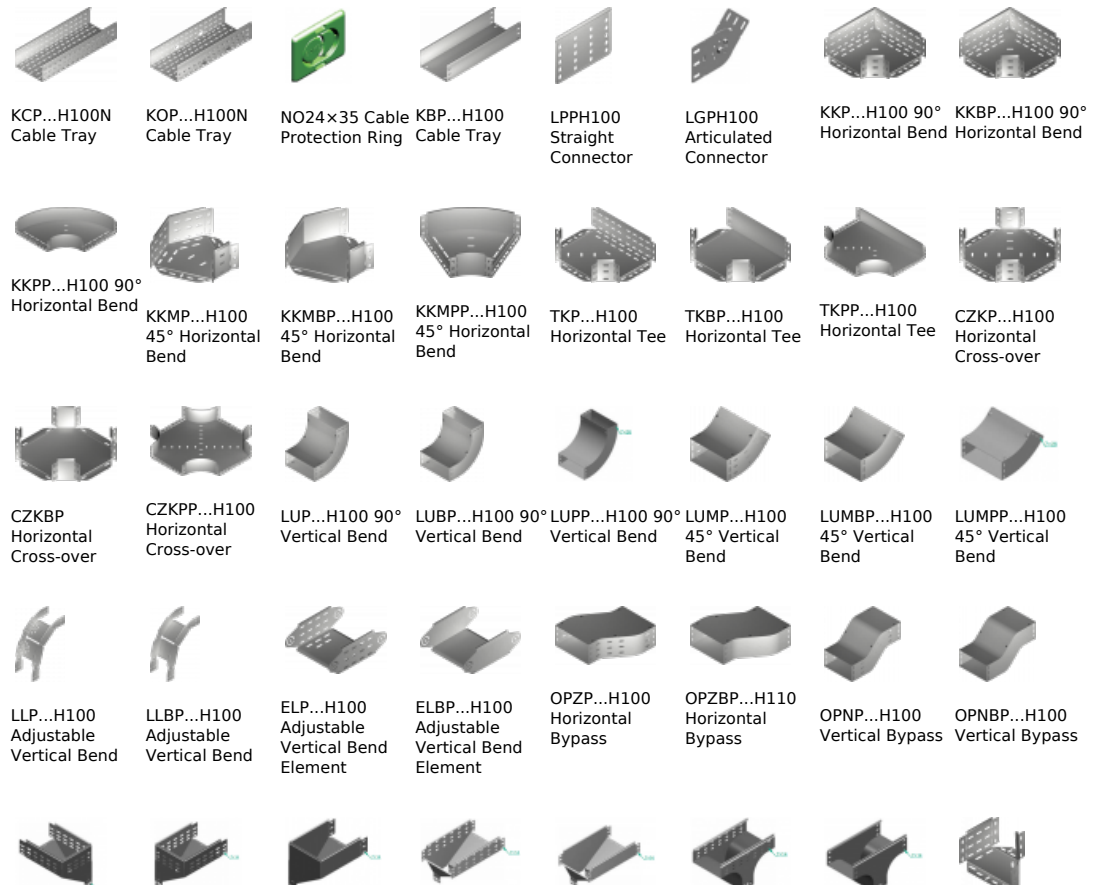
**This innovative solution allows for fast and safe cable laying without the need of pulling**








### Versions:

Sheet thickness: **1,5 mm**

Symbol	Width a [mm]	Catalogue number	Quantity in box	Weight 1 pc.
KRPBP100H100	100	118410	4	1,53
KRPBP150H100	150	118415	4	2,05
KRPBP200H100	200	118420	4	3,04
KRPBP300H100	300	118430	2	4,58
KRPBP400H100	400	118440	2	6,00
KRPBP500H100	500	118450	2	7,55
KRPBP600H100	600	118460	2	9,00

### Connected products:



KRPP...H100 Vertical Elbow - Right	KRLP...H100 Vertical Elbow - Left	KRLBP...H100 Vertical Elbow - Left	TRP...H100 Vertical Tee -Lengthwise	TRBP...H100 Vertical Tee -Lengthwise	TRSP...H100 Vertical Tee - Crosswise	TRSBP...H100 Vertical Tee - Crosswise	RKLP...H100 Left Reducer
							
RKLBP...H100 Left Reducer	RKPP...H100 Right Reducer	RKPBP...H100 Right Reducer	RKSP...H100 Straight Reducer	RKSBP...H100 Straight Reducer	TKDP...H100 Add-on Tee	LRPPH100 Corner Connector	