

TRSBP...H100 Vertical Tee - Crosswise

Overview:

Application

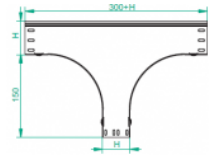
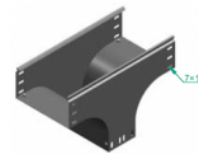
Branching out cable routes. Transition of tray cable run from the horizontal to the vertical plane.

Material

Steel, strip-galv. acc. to the Sendzimir method to PN-EN 10346:2011 (SG)

Available to order:

- F-** steel, hot-dip galv. to PN-EN ISO 1461:2011 (HDG)
- E-** stainless steel (SS)
- L-** powder coating in a full range of colours (PC)



For installation use Screw Sets SGK M6×12 or SG M6×12 and Straight Connectors LPL or LPP.
Quick and convenient installation by the use of dismantled parts
This innovative solution allows for fast and safe cable laying without the need of pulling

Versions:

Sheet thickness: **1,5 mm**

| Symbol | Width a [mm] | Catalogue number | Quantity in box | Weight 1 pc. |
|--------------|--------------|------------------|-----------------|--------------|
| TRSBP100H100 | 100 | 118810 | 4 | 2,35 |
| TRSBP150H100 | 150 | 118815 | 4 | 2,62 |
| TRSBP200H100 | 200 | 118820 | 4 | 2,90 |
| TRSBP300H100 | 300 | 118830 | 1 | 3,45 |
| TRSBP400H100 | 400 | 118840 | 1 | 4,00 |
| TRSBP500H100 | 500 | 118850 | 1 | 4,56 |
| TRSBP600H100 | 600 | 118860 | 1 | 5,11 |

Connected products:

| | | | | | | | |
|---|--|--|---|-------------------------------------|--------------------------------------|-------------------------------------|---|
| | | | | | | | |
| KCP...H100N Cable Tray | KOP...H100N Cable Tray | NO24×35 Cable Protection Ring | KBP...H100 Cable Tray | LPPH100 Straight Connector | LGP100 Articulated Connector | KKP...H100 90° Horizontal Bend | KKBP...H100 90° Horizontal Bend |
| | | | | | | | |
| KKPP...H100 90° Horizontal Bend | KKMP...H100 45° Horizontal Bend | KKMBP...H100 45° Horizontal Bend | KKMPP...H100 45° Horizontal Bend | TKP...H100 Horizontal Tee | TKBP...H100 Horizontal Tee | TKPP...H100 Horizontal Tee | CZKP...H100 Horizontal Cross-over |
| | | | | | | | |
| CZKBP Horizontal Cross-over | CZKPP...H100 Horizontal Cross-over | LUP...H100 90° Vertical Bend | LUBP...H100 90° Vertical Bend | LUPP...H100 90° Vertical Bend | LUMP...H100 45° Vertical Bend | LUMB...H100 45° Vertical Bend | LUMPP...H100 45° Vertical Bend |
| | | | | | | | |
| LLP...H100 Adjustable Vertical Bend | LLBP...H100 Adjustable Vertical Bend | ELP...H100 Adjustable Vertical Bend Element | ELBP...H100 Adjustable Vertical Bend Element | OPZP...H100 Horizontal Bypass | OPZBP...H100 Horizontal Bypass | OPNP...H100 Vertical Bypass | OPNBP...H100 Vertical Bypass |

KRPP...H100
Vertical Elbow -
RightKRPBP...H100
Vertical Elbow -
RightKRLP...H100
Vertical Elbow -
LeftKRLBP...H100
Vertical Elbow -
LeftTRP...H100
Vertical Tee
-LengthwiseTRBP...H100
Vertical Tee
-LengthwiseTRSP...H100
Vertical Tee -
CrosswiseRKLP...H100 Left
ReducerRKLPB...H100
Left ReducerRKPP...H100
Right ReducerRKPBP...H100
Right ReducerRKSP...H100
Straight
ReducerRKSBP...H100
Straight
ReducerTKDP...H100
Add-on TeeLRPPH100
Corner
Connector