

KRPBJ...H30 Vertical Elbow - Right

Overview:

Application

Transition of tray cable run in the horizontal plane to the vertical plane.

Material

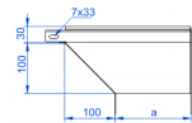
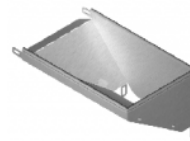
Steel, strip-galv. acc. to the Sendzimir method to PN-EN 10346:2011 (SG)

Available to order:

F- steel, hot-dip galv. to PN-EN ISO 1461:2011 (HDG)

E- stainless steel (SS)

L- powder coating in a full range of colours (PC)



For installation use Screw Sets SGK M6×10 or SG M6×10.

Quick and convenient installation by the use of dismantled parts

This innovative solution allows for fast and safe cable laying without the need of pulling

Versions:

Sheet thickness: **1,0 mm**

Symbol	Width a [mm]	Catalogue number	Quantity in box	Weight 1 pc.
KRPBJ50H30	50	136905	1	0,40
KRPBJ100H30	100	136910	1	0,62
KRPBJ150H30	150	136915	1	0,94
KRPBJ200H30	200	136920	1	1,24
KRPBJ300H30	300	136930	1	1,87

Connected products:



KGR...H30 Cable Tray



KGL...H30 Cable Tray



KGJ...H30 Cable Tray



KBJ...H30 Cable Tray



KBR...H30 Cable Tray



SGK... Screw Set



SM... Screw Set