

KRPP...H100 Vertical Elbow - Right

Overview:

Application

Transition of tray cable run in the horizontal plane to the vertical plane.

Material

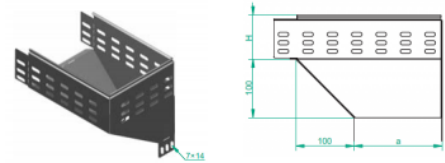
Steel, strip-galv. acc. to the Sendzimir method to PN-EN 10346:2011 (SG)

Available to order:

F- steel, hot-dip galv. to PN-EN ISO 1461:2011 (HDG)

E- stainless steel (SS)

L- powder coating in a full range of colours (PC)



For installation use Screw Sets SGK M6×12 or SG M6×12.

Quick and convenient installation by the use of dismantled parts

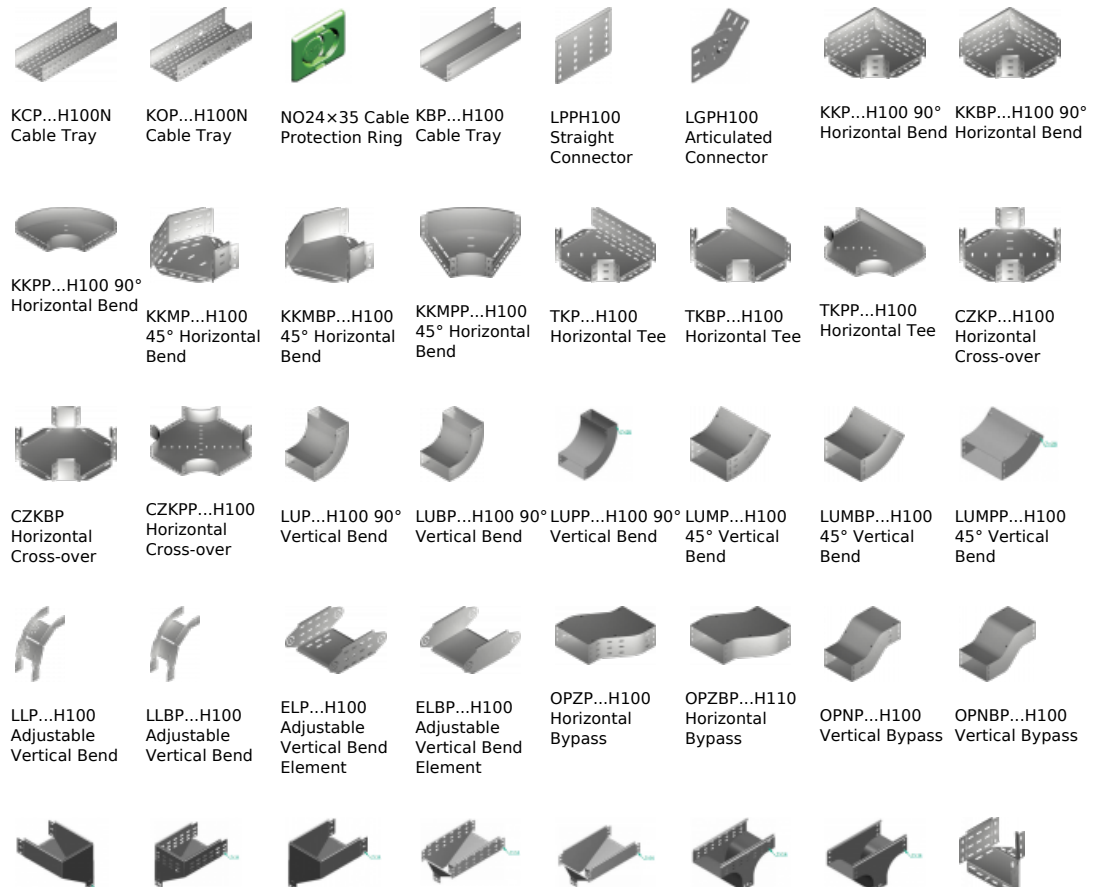
This innovative solution allows for fast and safe cable laying without the need of pulling








Versions:

Sheet thickness: **1,5 mm**

| Symbol | Width a [mm] | Catalogue number | Quantity in box | Weight 1 pc. |
|-------------|--------------|------------------|-----------------|--------------|
| KRPP100H100 | 100 | 114410 | 4 | 1,53 |
| KRPP150H100 | 150 | 114415 | 4 | 2,05 |
| KRPP200H100 | 200 | 114420 | 4 | 3,04 |
| KRPP300H100 | 300 | 114430 | 2 | 4,58 |
| KRPP400H100 | 400 | 114440 | 2 | 6,00 |
| KRPP500H100 | 500 | 114450 | 2 | 7,55 |
| KRPP600H100 | 600 | 114460 | 2 | 9,00 |

Connected products:



| | | | | | | | |
|---|---|---|---|--|---|---|-----------------------------|
| KRPBP...H100 Vertical Elbow - Right | KRLP...H100 Vertical Elbow - Left | KRLBP...H100 Vertical Elbow - Left | TRP...H100 Vertical Tee -Lengthwise | TRBP...H100 Vertical Tee -Lengthwise | TRSP...H100 Vertical Tee - Crosswise | TRSBP...H100 Vertical Tee - Crosswise | RKLP...H100 Left Reducer |
|  |  |  |  |  |  |  | |
| RKLBP...H100 Left Reducer | RKPP...H100 Right Reducer | RKPBP...H100 Right Reducer | RKSP...H100 Straight Reducer | RKSBP...H100 Straight Reducer | TKDP...H100 Add-on Tee | LRPPH100 Corner Connector | |