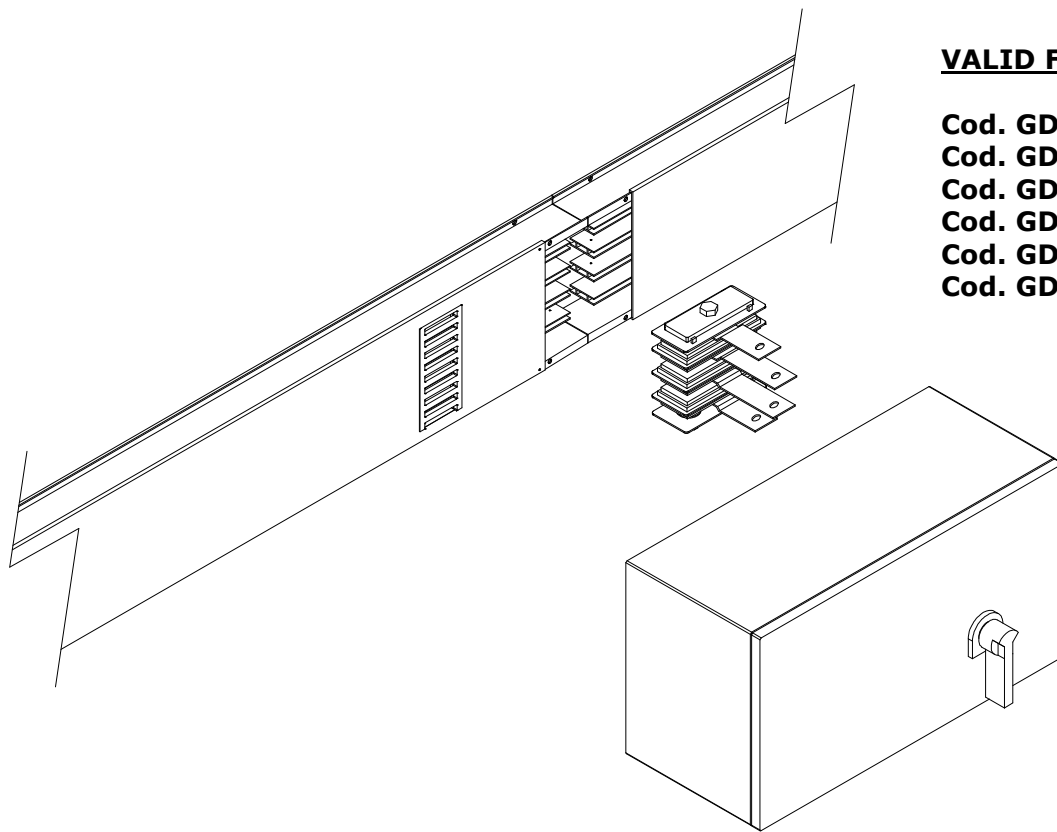
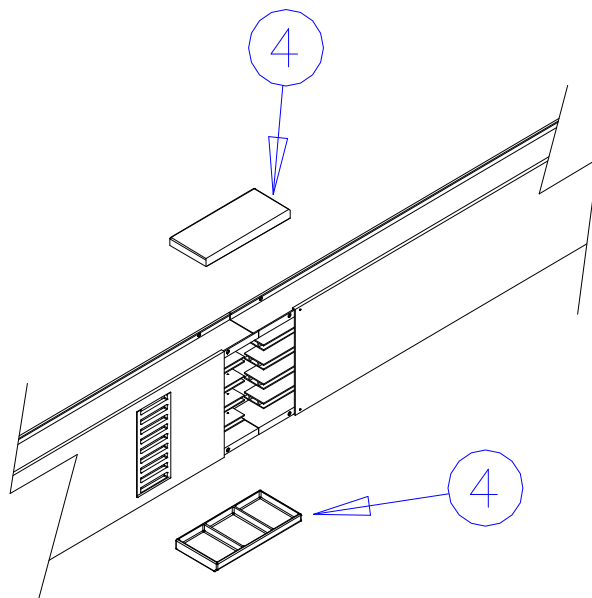


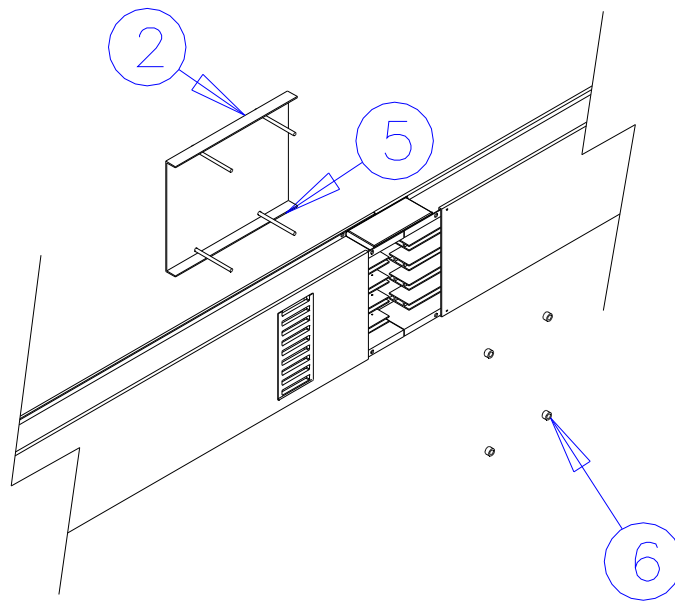
TAP OFF BOX 630/1250A**VALID FOR:****Cod. GDA406300/1/3****Cod. GDA408000/1/3****Cod. GDA410000/1/3****Cod. GDA406303****Cod. GDA408003****Cod. GDA410003**

CAUTION: PERFORM THE FOLLOWING STEPS WITH BUSBAR **NOT** LIVE

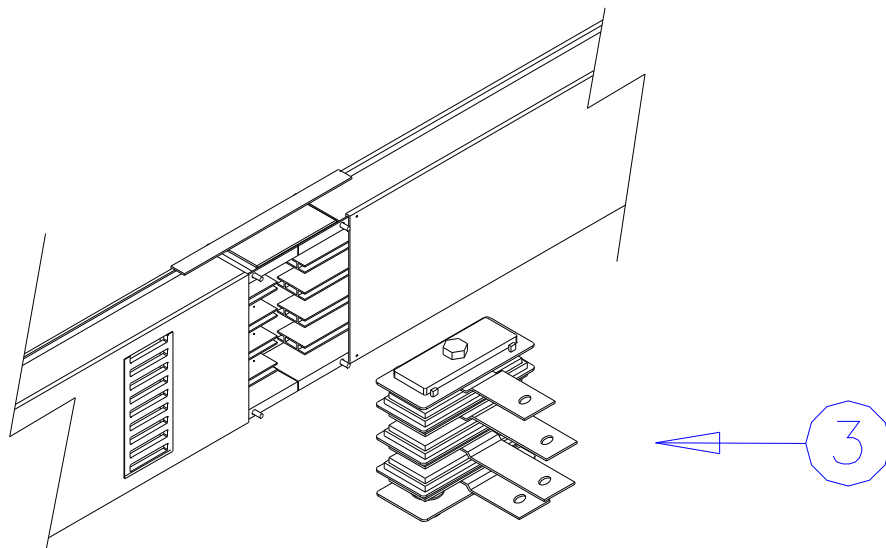
- a) If the line is mounted, dismount the cover joint and the monobolt joint.



- b) Install the aluminium joint cover (2) onto the closed part of the case, inserting the 5MA screws (5) and block the nuts (6).

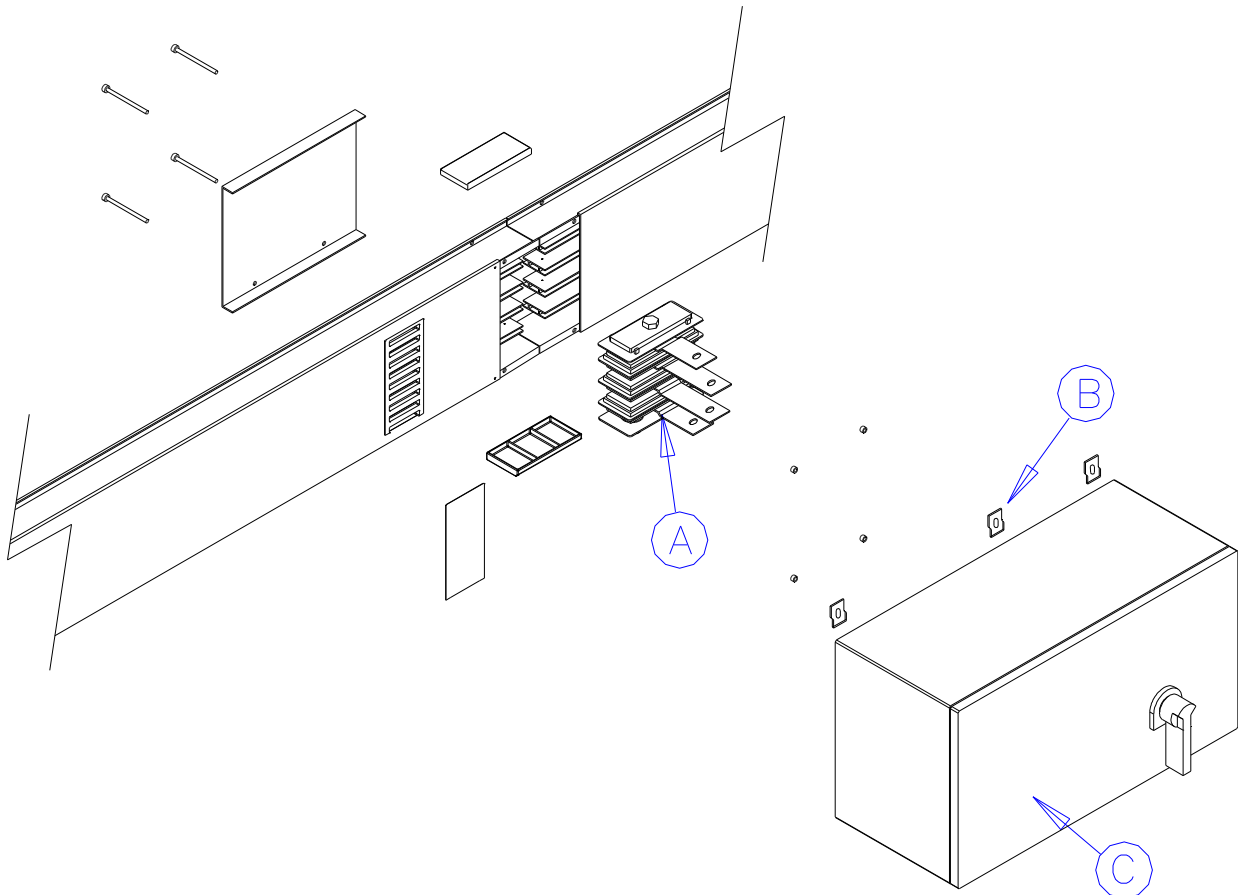


- c) Insert dedicated monobolt joint (3) supplied with tap off box and tighten with a torque wrench (with torque as standard joints).



- d) Insert tap off box on the line and fix the supports (B) (after dismount to protection of fibreglass inside the box).

- e) Block the conductors starting from fused switch on monobolt joint (A) (n°4 screws for each phase).



630/1250A tap off box part list	
A	Monobolt joint
B	Fixing hanger for tap off box
C	Tap off box 630-1250A