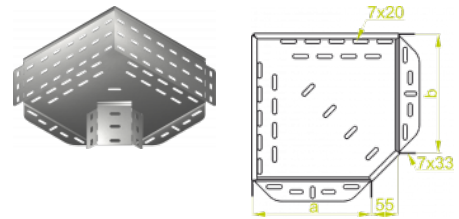


KKJ...H100 Koleno žlabu 90°

Informace:

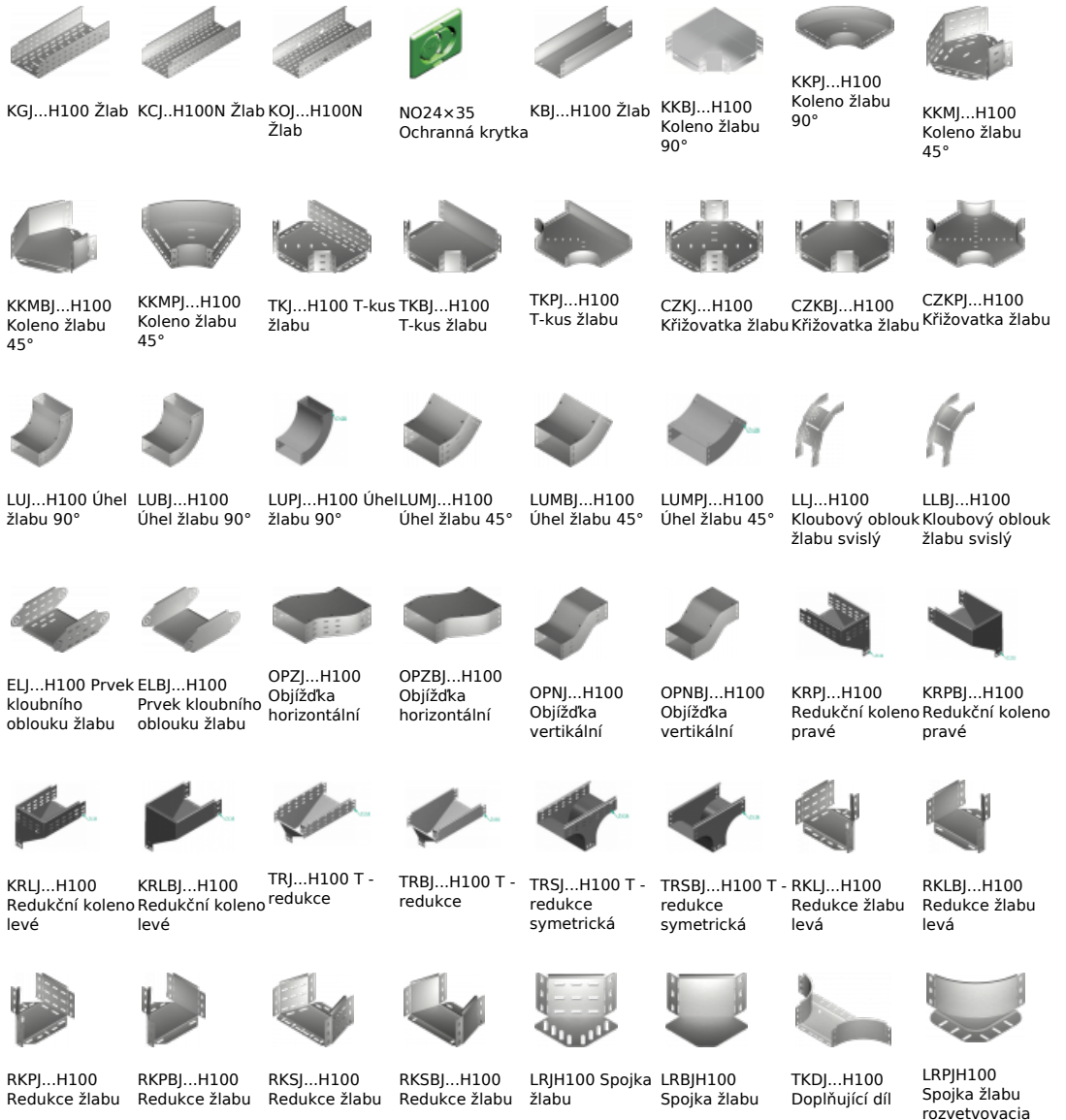


Verze:

 Tloušťka plechu: **1,0 mm**

| Symbol | Šířka a [mm] | Kat. číslo | Množ./bal. | Hmotnost [kg] |
|------------|--------------|------------|------------|---------------|
| KKJ100H100 | 100 | 112110 | 10 | 0,53 |
| KKJ150H100 | 150 | 112115 | 10 | 0,70 |
| KKJ200H100 | 200 | 112120 | 10 | 1,02 |
| KKJ300H100 | 300 | 112130 | 4 | 1,76 |
| KKJ400H100 | 400 | 112140 | 4 | 2,53 |
| KKJ500H100 | 500 | 112150 | 2 | 3,26 |
| KKJ600H100 | 600 | 112160 | 2 | 4,33 |

Související produkty:



pravá pravá symetrická symetrická rozvetvovacia rozvetvovacia žlabu T