

## TRSO... Drop-In Anchor - Steel

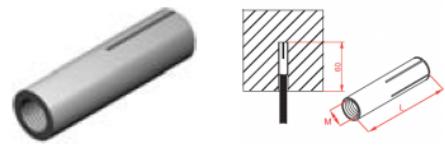
### Overview:

**Application**  
Suspending cable runs

**Material**  
Electro-galv. steel (EG)

**Available to order:**  
E- stainless steel (SS) in grades A2 /A4

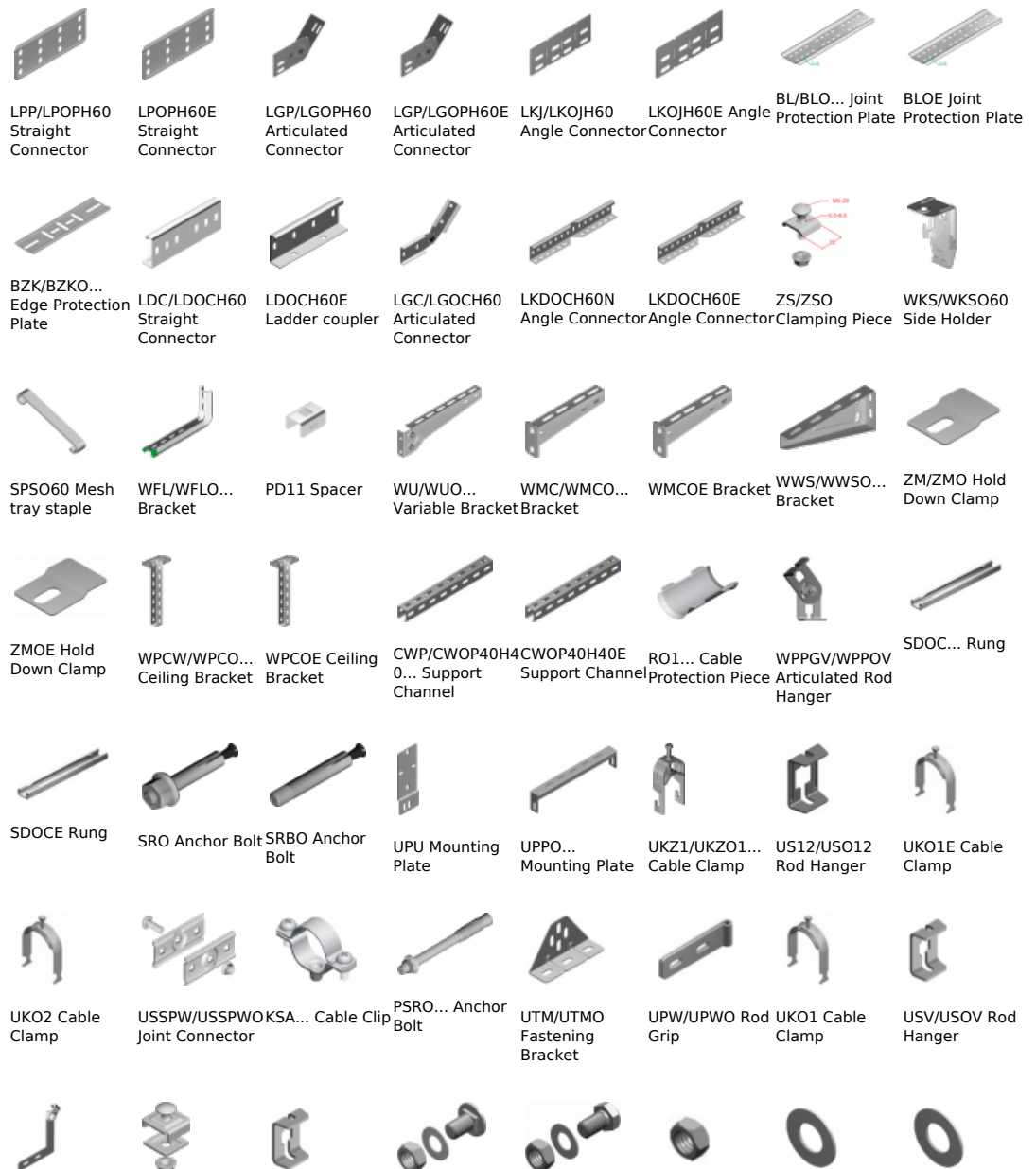
**Direct suspension of cable run without the use of Rod Hanger USOV**



### Versions:

Symbol	Length L [m]	Catalogue number	Quantity in box	Size M [mm]
<b>TRSOM6</b>	<b>30</b>	<b>804600</b>	<b>100</b>	<b>6</b>
<b>TRSOM8</b>	<b>30</b>	<b>804700</b>	<b>100</b>	<b>8</b>
<b>TRSOM10</b>	<b>40</b>	<b>804800</b>	<b>100</b>	<b>10</b>
<b>TRSOM10E</b>	<b>40</b>	<b>804801</b>	<b>100</b>	<b>10</b>
<b>TRSOM12</b>	<b>50</b>	<b>804900</b>	<b>100</b>	<b>12</b>

### Connected products:



UPWK/UPWKO  
Rod Grip



NLM Rod  
Connector



WPPOVE  
Articulated Rod  
Hanger

USSN/USJO Joint  
Connector



PGM... Threaded  
Rod



UNPO Fire  
partition-  
versatile

USOVE Rod  
Hanger



SBO... Concrete  
Screw



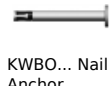
SGN Screw Set



SBSO...  
Concrete Screw



SM... Screw Set



KWBO... Nail  
Anchor



NS... Nut



GSO... Ceiling  
Nail



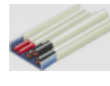
PP... Washer



KSKO... Hollow  
Ceiling Anchor



PW... Washer



PYRO-SAFE KS1  
Intumescent  
Fire Protection  
Coating