

CWOP40H40E Support Channel

Overview:

Application

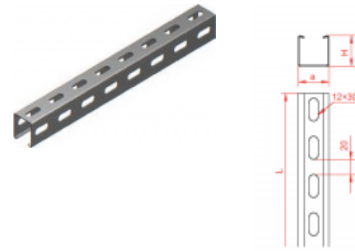
Used for suspending lighting, and as construction element for installing cable trays, and ladders.

Material

Steel, strip-galv. acc. to the Sendzimir method to PN-EN 10346:2011 (SG)

Available to order:

E- stainless steel sections to 3m long (SS)
L- powder coating in a full range of colours (PC)

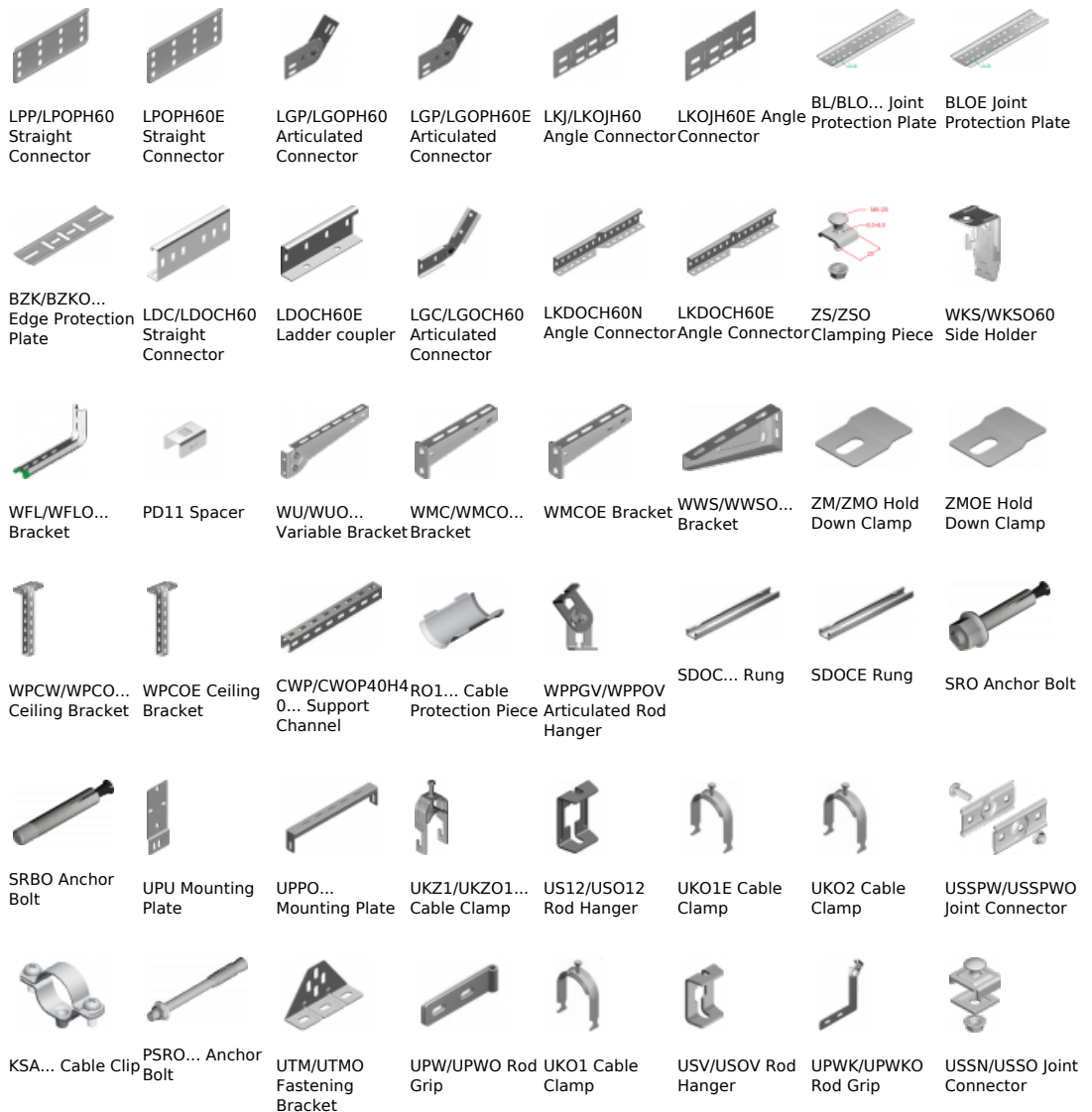


Versions:

Sheet thickness: **1,5 mm**

Symbol	Length L [m]	Width a [mm]	Catalogue number	Quantity in box	Height H [mm]	Weight 1 pc.
CWOP40H40/02E	200	40	805302	30	40	0,35
CWOP40H40/03E	300	40	805303	30	40	0,53
CWOP40H40/04E	400	40	805304	30	40	0,70
CWOP40H40/05E	500	40	805305	30	40	0,88
CWOP40H40/2E	2000	40	805320	8	40	3,50

Connected products:



USOVE Rod
HangerTRSO... Drop-In
Anchor - Steel

SGN Screw Set



SM... Screw Set



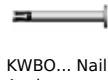
NS... Nut



PP... Washer



PW... Washer

NLM Rod
ConnectorPGM... Threaded
RodSBO... Concrete
ScrewSBSO...
Concrete ScrewKWBO... Nail
AnchorGSO... Ceiling
NailKSKO... Hollow -
Ceiling AnchorPYRO-SAFE KS1
Intumescent
Fire Protection
CoatingFLAMMOTECT-K
S1 Endothermic,
Weather
Resistant Fire
Protection
CoatingWPPOVE
Articulated Rod
HangerUNPO Fire
partition-
versatile