

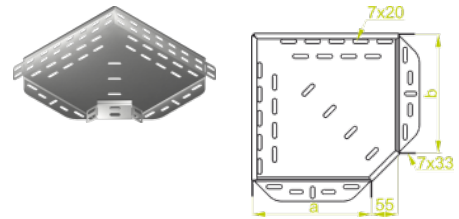
## KKJ...H50 90° Horizontal Bend

### Overview:

**Application**  
Diversions in cable routing.

**Material**  
Steel, strip-galv. acc. to the Sendzimir method to PN-EN 10346:2011 (SG)

**Available to order:**  
F- steel, hot-dip galv. to PN-EN ISO 1461:2011 (HDG)  
E- stainless steel (SS)  
L- powder coating in a full range of colours (PC)



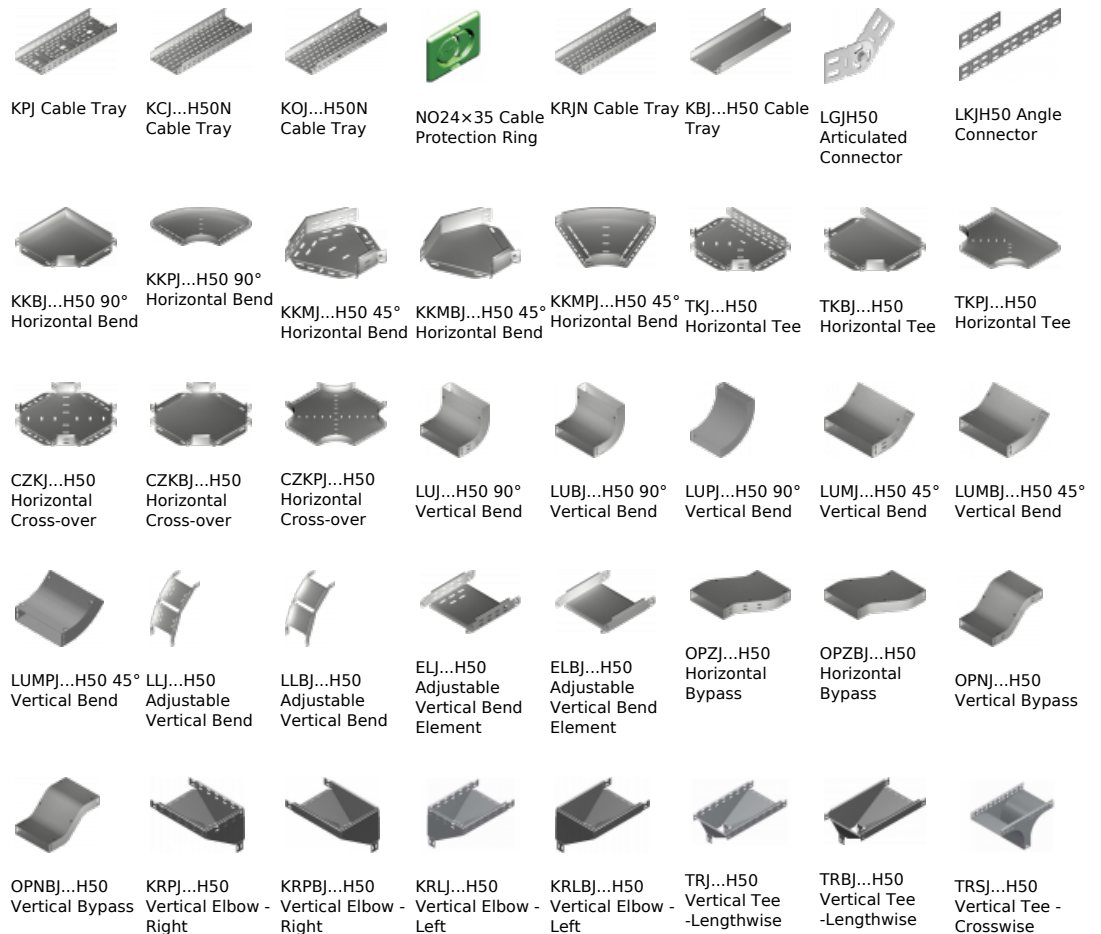
**For installation use Screw Sets SGK M6×12 or SG M6×12.**  
**In case of special orders please specify dimensions a and b.**

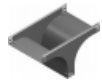
### Versions:

Sheet thickness: **1,0 mm**

Symbol	Width a [mm]	Catalogue number	Quantity in box	Weight 1 pc.
KKJ50H50	50	156205	20	0,21
KKJ100H50	100	156210	20	0,33
KKJ150H50	150	156215	10	0,56
KKJ200H50	200	156220	10	0,77
KKJ300H50	300	156230	10	1,28
KKJ400H50	400	156240	10	2,14
KKJ500H50	500	156250	10	2,86
KKJ600H50	600	156260	10	3,70

### Connected products:





TRSBJ...H50  
Vertical Tee -  
Crosswise



RKLJ...H50 Left  
Reducer



RKLBJ...H50 Left  
Reducer



RKPJ...H50 Right  
Reducer



RKPBJ...H50  
Right Reducer



RKSJ...H50  
Straight  
Reducer



RKSBJ...H50  
Straight  
Reducer



LRJH50 Corner  
Connector



LRBH50 Corner  
Connector



TKDJ...H50  
Add-on Tee



LRPJH50 Corner  
Connector