

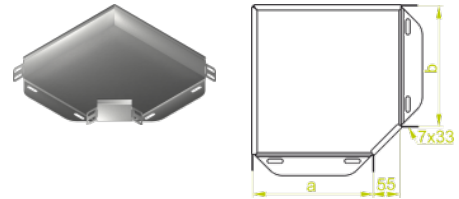
KKBJ...H50 90° Horizontal Bend

Overview:

Application
Diversion in cable routing.

Material
Steel, strip-galv. acc. to the Sendzimir method to PN-EN 10346:2011 (SG)

Available to order:
F- steel, hot-dip galv. to PN-EN ISO 1461:2011 (HDG)
E- stainless steel (SS)
L- powder coating in a full range of colours (PC)



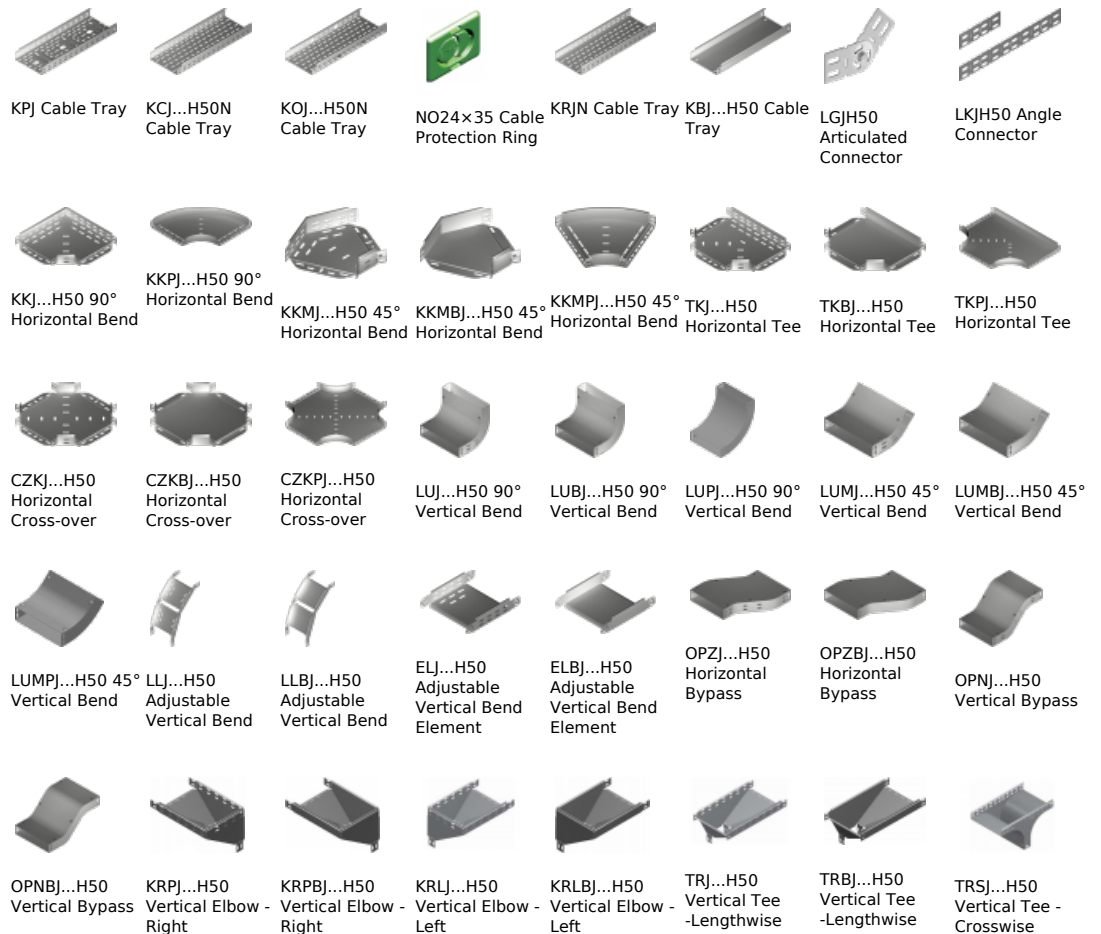
For installation use Screw Sets SGK M6×12 or SG M6×12.
In case of special orders please specify dimensions a and b.

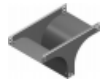
Versions:

Sheet thickness: **1,0 mm**

Symbol	Width a [mm]	Catalogue number	Quantity in box	Weight 1 pc.
KKBJ50H50	50	150101	20	0,21
KKBJ100H50	100	150201	20	0,33
KKBJ150H50	150	150301	10	0,56
KKBJ200H50	200	150401	10	0,77
KKBJ300H50	300	150601	10	1,28
KKBJ400H50	400	150701	10	2,14
KKBJ500H50	500	150801	10	2,86
KKBJ600H50	600	150901	10	3,70

Connected products:





TRSBJ...H50
Vertical Tee -
Crosswise



RKLJ...H50 Left
Reducer



RKLBJ...H50 Left
Reducer



RKPJ...H50 Right
Reducer



RKPBJ...H50
Right Reducer



RKSJ...H50
Straight
Reducer



RKSBJ...H50
Straight
Reducer



LRJH50 Corner
Connector



LRBH50 Corner
Connector



TKDJ...H50
Add-on Tee



LRPJH50 Corner
Connector