

## LSS N Fast Tab- Lock Fixing Bracket

### Overview:

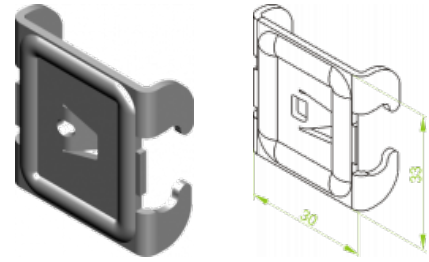
#### Application

Joining system components of Wire Mesh Cable Trays. For cable tray side heights H30, H60, H110.

At side height H30:  
for width 100mm use 3xUSS N  
for widths 200mm and 300mm use 4xUSS N.

At height H60:  
for width 60 use 2xUSS N  
for width 100 use 3xUSS N  
for widths: 200 - 400 use 4xUSS N  
for widths: 500 - 600mm use  
2 X USSW + 3xUSS N.

At height H110:  
for widths: 200 - 400mm use:  
2 x USSW + 2xUSS N  
for widths: 500 - 600mm use:  
2 x USSW + 3xUSS N



Joining Wire Mesh Cable Tray Lengths

at the tray bottom. Used in a set with Fast

Tab-Lock Coupler for Wire Mesh Cable Tray

LZS with cable trays H60, H110

and widths 200 - 600mm



### Connected products:

