

ZS/ZSO Clamping Piece

Overview:

Application

Fixing wire mesh cable trays to Brackets: WW, WPLS, WPTS.

Material

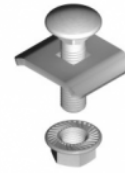
Electro-galvanised steel (EG)

Available to order:

F- steel, hot-dip galv. to PN-EN ISO 1461:2011 (HDG)

E- stainless steel (SS)

L- powder coating in a full range of colours (PC)



Connected products:

UKZ1/UKZO1... Cable Clamp	UKZ2... Cable Clamp	USSW Splice Washer Kit	USSPW/USSPWOLSS N Fast Tab-Joint Connector	Lock Fixing Bracket	PLC23/01 Connection Piece	ZSW Center Hanger	ZPNH80... Cover Clamp
NKS Bolt Cutter	BMS Mounting Plate	BSM Side Holder	WWSS... Bracket	WFLS... Bracket	WFCS... C-Bracket	SGKM6x... Screw Set	UUS Grounding Clamp
PMC/PMCO... Snap-in Support	WSD... Ceiling Bracket						