

KRLJ...H50 Vertical Elbow - Left

Overview:

Application

Transition of tray cable run in the horizontal plane to the vertical plane.

Material

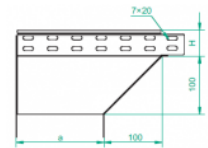
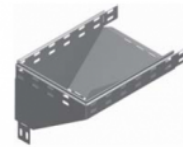
Steel, strip-galv. acc. to the Sendzimir method to PN-EN 10346:2011 (SG)

Available to order:

F- steel, hot-dip galv. to PN-EN ISO 1461:2011 (HDG)

E- stainless steel (SS)

L- powder coating in a full range of colours (PC)



For installation use Screw Sets SGK M6×12 or SG M6×12.

Quick and convenient installation by the use of dismantled parts

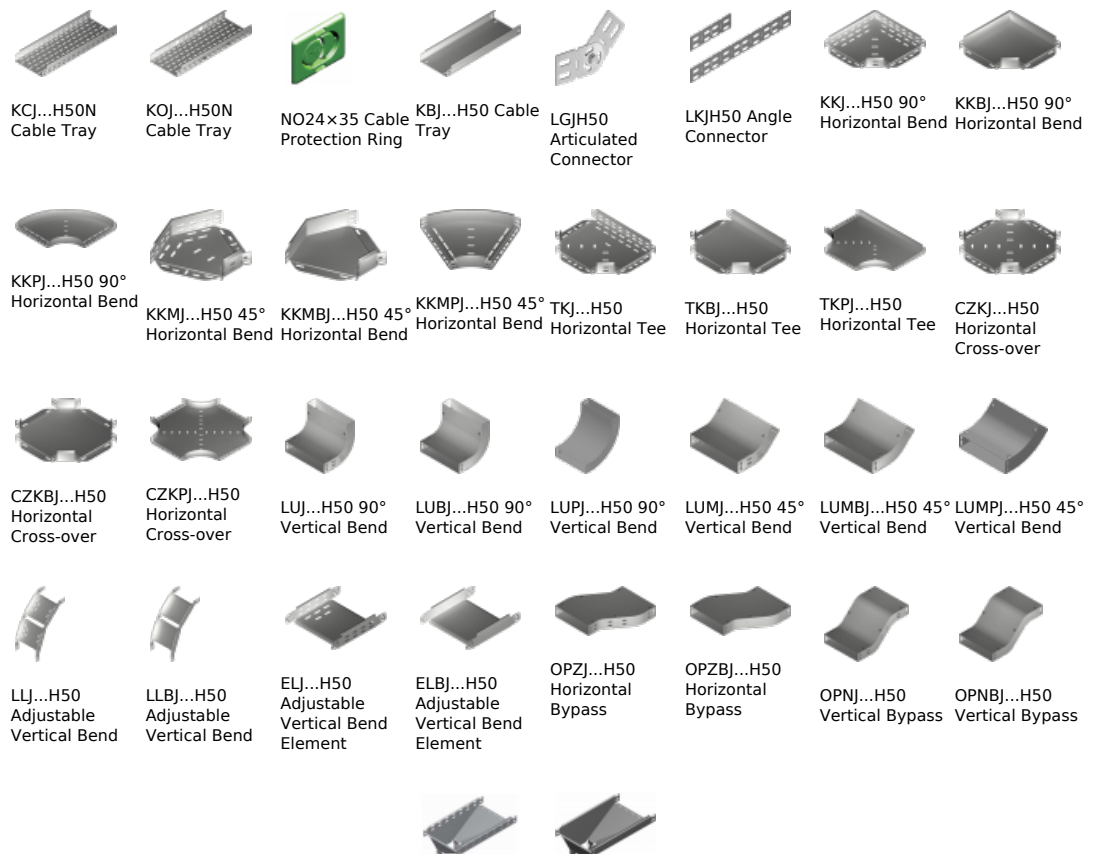
This innovative solution allows for fast and safe cable laying without the need of pulling

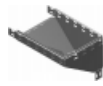
Versions:

Sheet thickness: **1,0 mm**

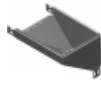
Symbol	Width a [mm]	Catalogue number	Quantity in box	Weight 1 pc.
KRLJ50H50	50	158205	10	0,48
KRLJ100H50	100	158210	10	0,70
KRLJ150H50	150	158215	6	1,06
KRLJ200H50	200	158220	6	1,41
KRLJ300H50	300	158230	4	2,11
KRLJ400H50	400	158240	4	2,80
KRLJ500H50	500	158250	2	3,51
KRLJ600H50	600	158260	2	4,22

Connected products:

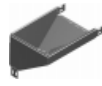




KRPJ...H50
Vertical Elbow -
Right



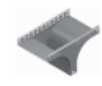
KRPBJ...H50
Vertical Elbow -
Right



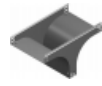
KRLBJ...H50
Vertical Elbow -
Left

TRJ...H50
Vertical Tee
-Lengthwise

TRBJ...H50
Vertical Tee
-Lengthwise



TRSJ...H50
Vertical Tee -
Crosswise



TRSBJ...H50
Vertical Tee -
Crosswise



RKLJ...H50 Left
Reducer



RKLBJ...H50 Left
Reducer



RKPJ...H50 Right
Reducer



RKPBJ...H50
Right Reducer



RKSJ...H50
Straight
Reducer



RKSBJ...H50
Straight
Reducer



LRJH50 Corner
Connector



LRBJH50 Corner
Connector



TKDJ...H50
Add-on Tee



LRPJH50 Corner
Connector