

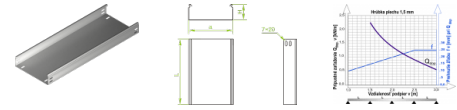
KBP...H50 Cable Tray

Overview:

Application
Cable routing

Material
Steel, strip-galv. acc. to the Sendzimir method to PN-EN 10346:2011 (SG)

Available to order:
F- steel, hot-dip galv. to PN-EN ISO 1461:2011 (HDG)
E- stainless steel (SS)
L- powder coating in a full range of colours (PC)



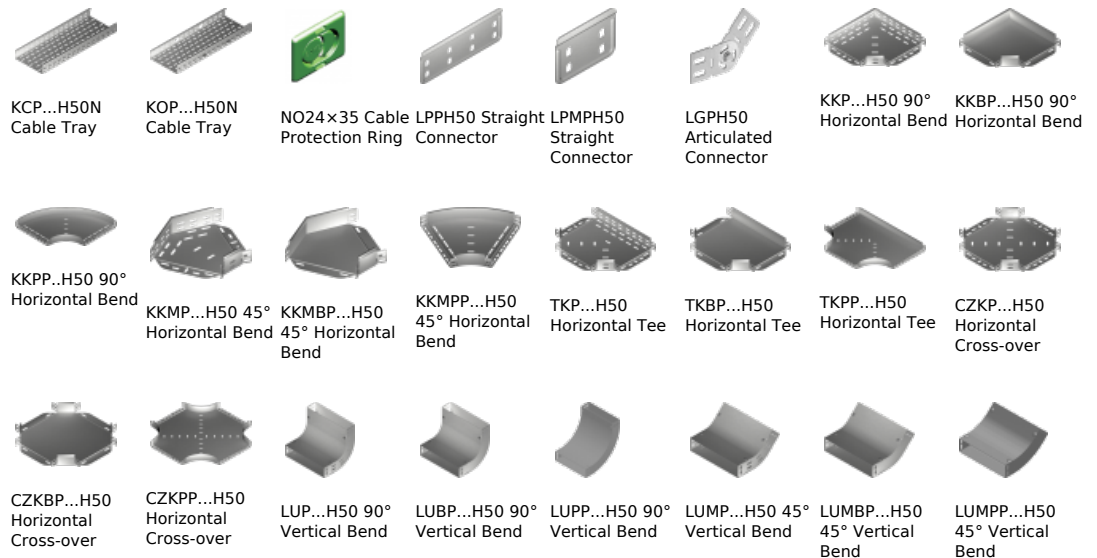
Important!
Possibility of joining cable tray KBR..., KBL..., KBJ... and KBD... sections together through sliding one into another and connector-free assembly. Cable Tray sections of KBP... can be joined up only through the use of connectors (lack of cut in the flange at the end of side profile). Available when ordering in large quantity are 6m long tray sections. To install cable tray use Screw Sets SGK M6x12 or SG M6x12.

Versions:

Sheet thickness: 1,5 mm

Symbol	Length L [m]	Width a [mm]	Catalogue number	Quantity in box	Weight [1m]	Effective section
KBP50H50/2	2000	50	152505	12	2,16	2300
KBP50H50/3	3000	50	152605	12	2,16	2300
KBP100H50/2	2000	100	152510	6	2,76	4800
KBP100H50/3	3000	100	152610	6	2,76	4800
KBP150H50/2	2000	150	152515	6	3,36	7300
KBP150H50/3	3000	150	152615	6	3,36	7300
KBP200H50/2	2000	200	152520	6	3,96	9800
KBP200H50/3	3000	200	152620	6	3,96	9800
KBP300H50/2	2000	300	152530	4	5,16	14800
KBP300H50/3	3000	300	152630	4	5,16	14800
KBP400H50/2	2000	400	151940	4	6,36	19800
KBP400H50/3	3000	400	152040	4	6,36	19800
KBP500H50/2	2000	500	151950	2	7,56	24800
KBP500H50/3	3000	500	152050	2	7,56	24800
KBP600H50/2	2000	600	151960	2	8,76	29800
KBP600H50/3	3000	600	152060	2	8,76	29800

Connected products:





LLP...H50
Adjustable
Vertical Bend



LLBP...H50
Adjustable
Vertical Bend



ELP...H50
Adjustable
Vertical Bend
Element



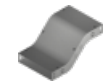
ELBP...H50
Adjustable
Vertical Bend
Element



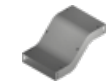
OPZP...H50
Horizontal
Bypass



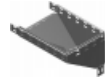
OPZBP...H50
Horizontal
Bypass



OPNP...H50
Vertical Bypass



OPNBP...H50
Vertical Bypass



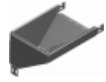
KRPP...H50
Vertical Elbow -
Right



KRPBP...H50
Vertical Elbow -
Right



KRLP...H50
Vertical Elbow -
Left



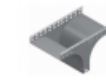
KRLBP...H50
Vertical Elbow -
Left



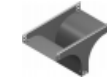
TRP...H50
Vertical Tee
-Lengthwise



TRBP...H50
Vertical Tee
-Lengthwise



TRSP...H50
Vertical Tee -
Crosswise



TRSBP...H50
Vertical Tee -
Crosswise



RKLP...H50 Left
Reducer



RKLBP...H50 Left
Reducer



RKPP...H50
Right Reducer



RKPBP...H50
Right Reducer



RKSP...H50
Straight
Reducer



RKSBP...H50
Straight
Reducer



TKDP...H50
Add-on Tee



LRPPH50 Corner
Connector