

LUBP...H50 90° Vertical Bend

Overview:

Application

Diversions in cable routing.

Material

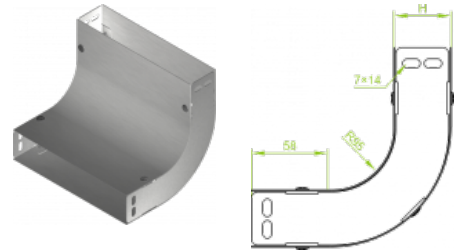
Steel, strip-galv. acc. to the Sendzimir method to PN-EN 10346:2011 (SG)

Available to order:

F- steel, hot-dip galv. to PN-EN ISO 1461:2011 (HDG)

E- stainless steel (SS)

L- powder coating in a full range of colours (PC)



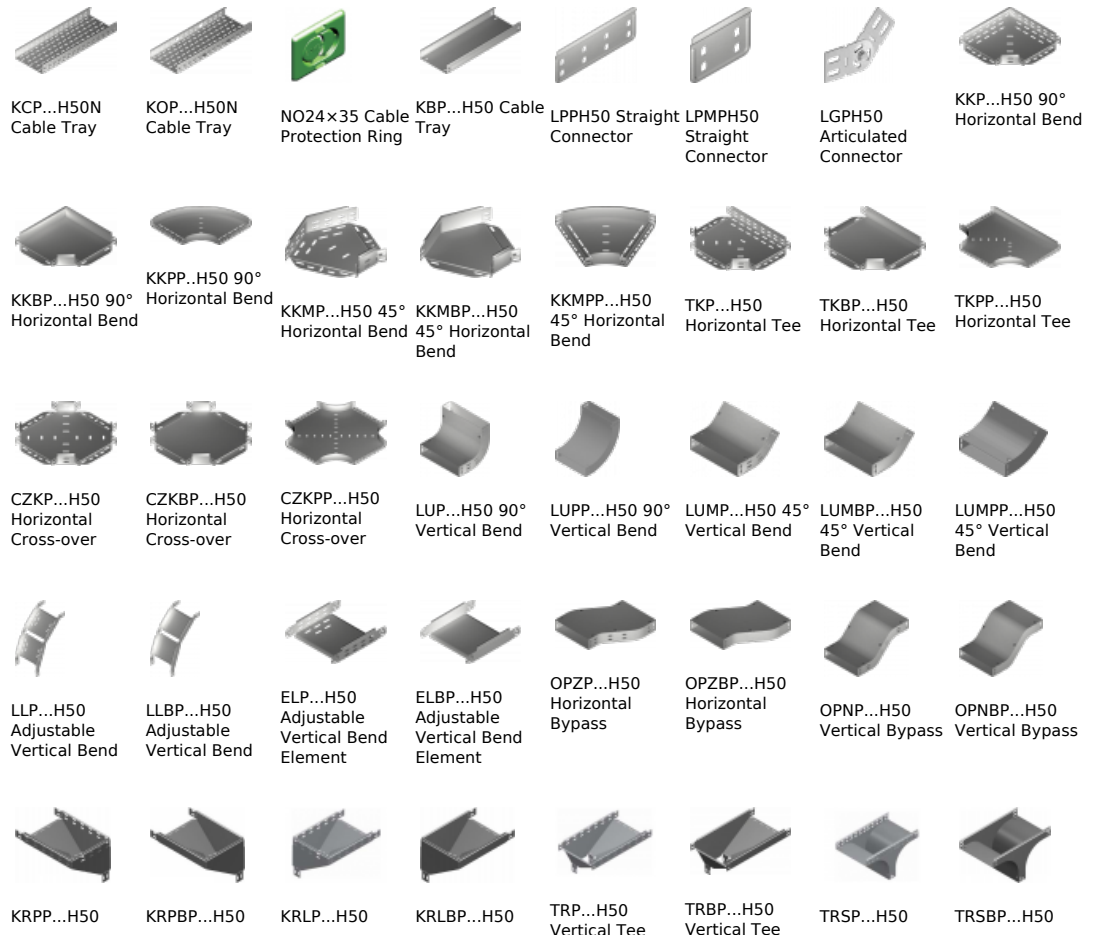
For installation use Screw Sets SGK M6×12 or SG M6×12 and Straight Connectors LPL or LPP. Quick and convenient installation by the use of dismantled parts. This innovative solution allows for fast and safe cable laying without the need of pulling

Versions:

Sheet thickness: 1,5 mm

Symbol	Width a [mm]	Catalogue number	Quantity in box	Weight 1 pc.
LUBP50H50	50	151902	10	0,87
LUBP100H50	100	152002	10	1,26
LUBP150H50	150	152102	10	1,66
LUBP200H50	200	152202	10	2,10
LUBP300H50	300	152402	4	2,94
LUBP400H50	400	152502	4	3,78
LUBP500H50	500	152602	4	4,57
LUBP600H50	600	152702	4	5,42

Connected products:



Vertical Elbow - Right	Vertical Elbow - Right	Vertical Elbow - Left	Vertical Elbow - Left	-Lengthwise	-Lengthwise	Vertical Tee - Crosswise	Vertical Tee - Crosswise
							
RKLP...H50 Left Reducer	RKLB...H50 Left Reducer	RKPP...H50 Right Reducer	RKPB...H50 Right Reducer	RKSP...H50 Straight Reducer	RKSB...H50 Straight Reducer	TKDP...H50 Add-on Tee	LRPPH50 Corner Connector